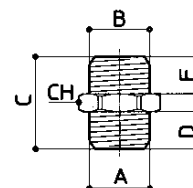


SA11 RECTO CILINDRICO MACHO



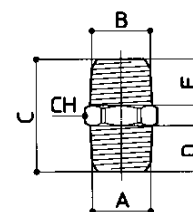
CODIGO	A	B	C	D	E	F	G	CH	CH1	Gr
SA11M5M5	M5	M5	12	4	4			8		
SA11M518	M5	1/8	15	4,5	6			14		
SA111818	1/8	1/8	16,5	6	6			14		
SA111814	1/8	1/4	19	6	8			17		
SA111838	1/8	3/8	20	6	9			19		
SA111812	1/8	1/2	22	6	10			24		
SA111414	1/4	1/4	21	8	8			17		
SA111438	1/4	3/8	22	8	9			19		
SA111412	1/4	1/2	24	8	10			24		
SA111434	1/4	3/4	25	8	11			30		
SA113838	3/8	3/8	24	9	9			19		
SA113812	3/8	1/2	25	9	10			24		
SA113834	3/8	3/4	27	9,5	11			30		
SA111212	1/2	1/2	26	10	10			24		
SA111234	1/2	3/4	28	10	11			30		
SA111210	1/2	1"	36	11	15			36		
SA113434	3/4	3/4	29	11	11			30		
SA113410	3/4	1"	28	11,5	13			30		
SA111010	1"	1"	33	13	13			36		
SA1110114	1"	1"1/4	36	12	15			48		
SA11114114	1"1/4	1"1/4	39	15	15			48		
SA11114112	1"1/4	1"1/2	38	12	16			54		
SA11112112	1"1/2	1"1/2	42	16	16			54		
SA1111220	1"1/2	2"	45	16	19			66		
SA112020	2"	2"	48	19	19			66		



SA12 RECTO CONICO MACHO



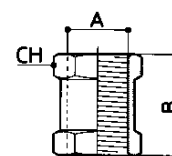
CODIGO	A	B	C	D	E	F	G	CH	CH1	Gr
SA121818	1/8	1/8	20	8	8			12		
SA121814	1/8	1/4	23	8	11			14		
SA121838	1/8	3/8	24	8	11			17		
SA121834	1/8	3/4	32	11,5	14			27		
SA121414	1/4	1/4	26	11	11			14		
SA121438	1/4	3/8	27	11	11			17		
SA121412	1/4	1/2	32	11,5	14			22		
SA121434	1/4	3/4	32	11,5	14			27		
SA123838	3/8	3/8	28	11,5	11,5			17		
SA123812	3/8	1/2	32	11,5	14			22		
SA123834	3/8	3/4	32	11,5	14			27		
SA121212	1/2	1/2	33,5	14	14			22		
SA121234	1/2	3/4	35	14	14			27		
SA123434	3/4	3/4	35	16,5	16,5			27		
SA123410	3/4	1"	38	14	16			36		
SA121010	1"	1"	38	16	16			36		
SA1210114	1"	1"1/4	44	15	20			48		
SA12114114	1"1/4	1"1/4	49	20	20			48		
SA12114112	1"1/4	1"1/2	53	20	23			54		
SA12112112	1"1/2	1"1/2	56	23	23			54		
SA1211220	1"1/2	2"	57	23	24			66		
SA122020	2"	2"	58	24	24			66		



SA13 RECTO HEMBRA



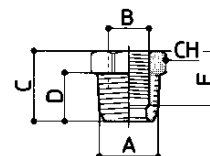
CODIGO	A	B	C	D	E	F	G	CH	CH1	Gr
SA13M5M5	M5	M5	11					8		
SA131818	1/8	1/8	15					14		
SA131414	1/4	1/4	22					17		
SA133838	3/8	3/8	23					22		
SA131212	1/2	1/2	30					25		
SA133434	3/4	3/4	29					32		
SA131010	1"	1"	32					38		



SA14 REDUCCION CONICA MACHO/HEMBRA



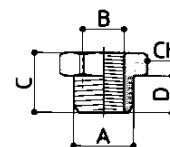
CODIGO	A	B	C	D	E	F	G	CH	CH1	Gr
SA1418M5	1/8	M5	12	8	6			12		
SA1418M6	1/8	M6	12,5	8	8			12		
SA141418	1/4	1/8	16	11	8			14		
SA143818	3/8	1/8	16,5	11,5	8			17		
SA143814	3/8	1/4	16,5	11,5	11			17		
SA141218	1/2	1/8	20	14	8			22		
SA141214	1/2	1/4	20	14	11			22		
SA141238	1/2	3/8	20	14	14			22		
SA143414	3/4	1/4	23,5	16	12			27		
SA143438	3/4	3/8	23,5	16	16			27		
SA143412	3/4	1/2	23,5	16	16			27		
SA141014	1"	1/4	-	-	-			-		
SA141038	1"	3/8	23	-	-			36		
SA141012	1"	1/2	23	-	-			36		
SA141034	1"	3/4	23	-	-			36		
SA1411410	1"1/4	1"	29	-	-			44		
SA1411210	1"1/2	1"	33	-	-			48		
SA14112114	1"1/2	1"1/4	33	-	-			48		
SA1420114	2"	1"1/4	36	-	-			61		
SA1420112	2"	1"1/2	36	-	-			61		



SA15 REDUCCION CILINDRICA MACHO/HEMBRA



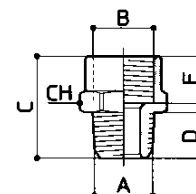
CODIGO	A	B	C	D	E	F	G	CH	CH1	Gr
SA1518M5	1/8	M5	10,5	6				14		
SA1518M6	1/8	M6	10,5	6				14		
SA151418	1/4	1/8	13	8				17		
SA153818	3/8	1/8	14	9				19		
SA153814	3/8	1/4	14	9				19		
SA151218	1/2	1/8	15,5	10				24		
SA151214	1/2	1/4	15,5	10				24		
SA151238	1/2	3/8	15,5	10				24		
SA153412	3/4	1/2	17,5	11,5				30		
SA153438	3/4	3/8	16	11,5				30		
SA153412	3/4	1/2	17,5	11,5				30		
SA151038	1"	3/8	19	13				36		
SA151012	1"	1/2	20	13				36		
SA151034	1"	3/4	20	13				36		
SA1511410	1"1/4	1"	22	15				44		
SA15112114	1"1/2	1"1/4	24	16				48		
SA1520114	2"	1"1/4	29	19				61		
SA1520112	2"	1"1/2	29	19				61		



SA16 PROLONGADOR CONICO MACHO/HEMBRA



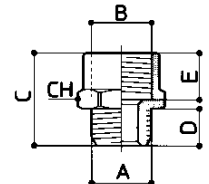
CODIGO	A	B	C	D	E	F	G	CH	CH1	Gr
SA161818	1/8	1/8	18	8	8			14		
SA161814	1/8	1/4	21,5	8	11			17		
SA161838	1/8	3/8	23	8	12			22		
SA161812	1/8	1/2	27,5	10	14			24		
SA161418	1/4	1/8	23	10	8			17		
SA161414	1/4	1/4	24,5	11	11			17		
SA161438	1/4	3/8	25,5	11	11,5			22		
SA161412	1/4	1/2	28	11	14			24		
SA161434	1/4	3/4	28,5	11	14			30		
SA163814	3/8	1/4	25	11	10			22		
SA163838	3/8	3/8	27	12	12			22		
SA163812	3/8	1/2	29	12	14			24		
SA163834	3/8	3/4	29	10	-			32		
SA161238	1/2	3/8	32	14	11			22		
SA161212	1/2	1/2	31,5	14	14			24		
SA161234	1/2	3/4	30	12	-			32		
SA161210	1/2	1"	31	12	13			38		
SA163434	3/4	3/4	31	13	17			32		
SA163410	3/4	1"	32	14	-			38		
SA161010	1"	1"	33	16	-			38		



SA17 PROLONGACION CILINDRICA MACHO/HEMBRA



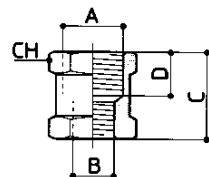
CODIGO	A	B	C	D	E	F	G	CH	CH1	Gr
SA17M5M5	M5	M5	11	4,5	-			8		
SA17M518	M5	1/8	15	5	8			14		
SA17M618	M6	1/8	16	6	8			14		
SA171818	1/8	1/8	16	6	8			14		
SA171814	1/8	1/4	20,5	6	12			17		
SA171838	1/8	3/8	20,5	6	12			22		
SA171812	1/8	1/2	24	7	14			24		
SA171418	1/4	1/8	21	8	8			17		
SA171414	1/4	1/4	22,5	8	12			17		
SA171438	1/4	3/8	23	8	12			22		
SA171412	1/4	1/2	25	8	14			24		
SA171434	1/4	3/4	25	8	14			30		
SA173814	3/8	1/4	24	10	10			22		
SA173838	3/8	3/8	24	9	12			22		
SA173812	3/8	1/2	26	9	14			24		
SA173834	3/8	3/4	26	9	14			30		
SA171238	1/2	3/8	30	12	11			26		
SA171212	1/2	1/2	27	10	14			27		
SA171234	1/2	3/4	27	10	14			30		
SA171210	1/2	1"	29,5	11	18			38		
SA173434	3/4	3/4	29	11	-			32		
SA173410	3/4	1"	29	11	-			38		
SA171010	1"	1"	30	12	-			38		



SA18 PROLONGACION HEMBRA/HEMBRA



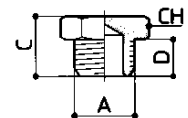
CODIGO	A	B	C	D	E	F	G	CH	CH1	Gr
SA18M518	1/8	M5	13	4				14		
SA181814	1/4	1/8	22	10				17		
SA181838	3/8	1/8	20	-				22		
SA181812	1/2	1/8	23,5	-				24		
SA181438	3/8	1/4	24	12				22		
SA181412	1/2	1/4	25,5	-				24		
SA183812	1/2	3/8	24	12				25		
SA183834	3/4	3/8	26	10				32		
SA181234	3/4	1/2	26	10				32		
SA181210	1"	1/2	26	9				38		
SA183410	1"	3/4	26	9				38		



SA19 TAPON CABEZA HEXAGONAL CILINDRICO MACHO



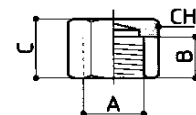
CODIGO	A	B	C	D	E	F	G	CH	CH1	Gr
SA1900M5	M5		7,5	4				8		
SA190018	1/8		10,5	6				14		
SA190014	1/4		13	8				17		
SA190038	3/8		14	9				19		
SA190012	1/2		15,5	10				24		
SA190034	3/4		17	11				30		
SA190010	1"		18,5	13				36		



SA20 TAPON CABEZA HEXAGONAL HEMBRA



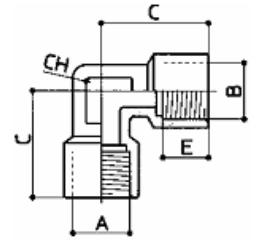
CODIGO	A	B	C	D	E	F	G	CH	CH1	Gr
SA2000M5	M5	-	7					8		
SA200018	1/8	8	12					14		
SA200014	1/4	11	15,5					17		
SA200038	3/8	11,5	17					20		
SA200012	1/2	-	14,5					24		
SA200034	3/4	-	14,5					30		
SA200010	1"	-	14					38		



SA21 CODO HEMBRA/HEMBRA



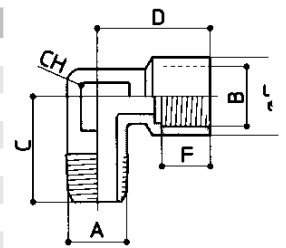
CODIGO	A	B	C	D	E	F	G	CH	CH1	Gr
SA21M5M5	M5	M5	8,5	-	-	-	-	8	-	-
SA211818	1/8	1/8	21	-	8	-	-	10	-	-
SA211414	1/4	1/4	25,5	-	11	-	-	13	-	-
SA213838	3/8	3/8	28	-	11,5	-	-	17	-	-
SA211212	1/2	1/2	33,5	-	14	-	-	21	-	-
SA213434	3/4	3/4	34	-	17	-	-	27	-	-
SA211010	1"	1"	45	-	21	-	-	30	-	-



SA22 CODO CONICO MACHO/HEMBRA



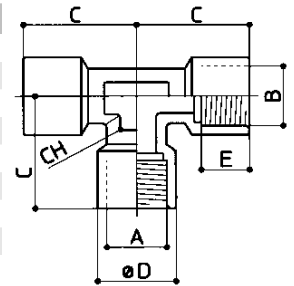
CODIGO	A	B	C	D	E	F	G	CH	CH1	Gr
SA22M5M5	M5	M5	11	11,5	-	4	-	9	-	-
SA221818	1/8	1/8	18,5	21	-	8	-	10	-	-
SA221418	1/4	1/8	21,5	21	-	8	-	10	-	-
SA221414	1/4	1/4	23,5	25,5	-	11	-	13	-	-
SA223838	3/8	3/8	26	28	-	11,5	-	17	-	-
SA221212	1/2	1/2	31	33,5	-	14	-	21	-	-
SA223434	3/4	3/4	31	33	-	18	-	27	-	-
SA221010	1"	1"	38	47	-	20	-	30	-	-



SA23 T INTERMEDIA



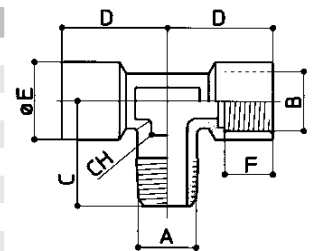
CODIGO	A	B	C	D	E	F	G	CH	CH1	Gr
SA23M5M5	M5	M5	8,5	-	-	-	-	8	-	-
SA231818	1/8	1/8	21	-	8	-	-	10	-	-
SA231414	1/4	1/4	25,5	-	11	-	-	13	-	-
SA233838	3/8	3/8	28	-	11,5	-	-	17	-	-
SA231212	1/2	1/2	38,5	-	14	-	-	21	-	-
SA233434	3/4	3/4	35	33	17	-	-	27	-	-
SA231010	1"	1"	45	39	21	-	-	30	-	-



SA24 T CENTRAL CONICA MACHO/HEMBRA/HEMBRA



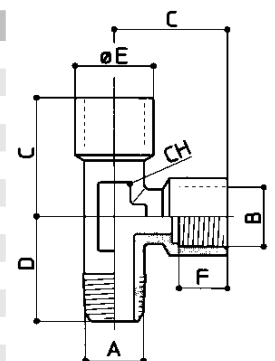
CODIGO	A	B	C	D	E	F	G	CH	CH1	Gr
SA24M5M5	M5	M5	11,5	11	-	4	-	9	-	-
SA241818	1/8	1/8	18,5	21	-	8	-	10	-	-
SA241414	1/4	1/4	23,5	21,5	-	11	-	18	-	-
SA243838	3/8	3/8	26	28	-	11,5	-	17	-	-
SA241212	1/2	1/2	31	33,5	-	14	-	21	-	-
SA243434	3/4	3/4	32	37	-	17	-	27	-	-
SA241010	1"	1"	40	45	-	20	-	30	-	-



SA25 T LATERAL CONICA MACHO/HEMBRA/HEMBRA



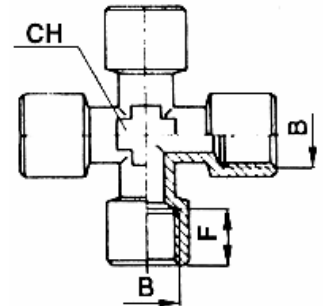
CODIGO	A	B	C	D	E	F	G	CH	CH1	Gr
SA25M5M5	M5	M5	8,5	14	-	-	-	8	-	-
SA251818	1/8	1/8	21	18,5	-	8	-	10	-	-
SA251414	1/4	1/4	25,5	23,5	-	11	-	13	-	-
SA253838	3/8	3/8	28	26	-	11,5	-	17	-	-
SA251212	1/2	1/2	33,5	31	-	14	-	21	-	-
SA253434	3/4	3/4	36	33	-	18	-	27	-	-
SA251010	1"	1"	40	45	-	20	-	30	-	-



SA26 CRUZ INTERMEDIA HEMBRA



CODIGO	B	C	D	E	F	G	CH	CH1	Gr
SA261818	1/8				8		10		
SA261414	1/4				11		13		
SA263838	3/8				11,5		17		
SA261212	1/2				14		21		
X SA263434	3/4				16		26		

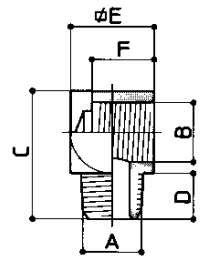


X Acero Inox.

SA27 CODO CONICO MACHO/HEMBRA



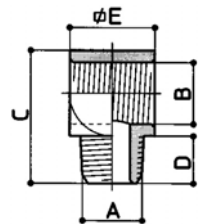
CODIGO	A	B	C	D	E	F	G	CH	CH1	Gr
SA27M5M5	M5	M5	16	5	9					
SA271818	1/8	1/8	22	8	14					
SA271414	1/4	1/4	28	10	-					



SA28 T CENTRAL CONICA MACHO/HEMBRA/HEMBRA



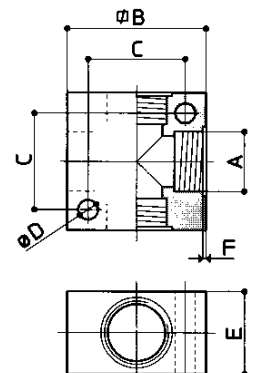
CODIGO	A	B	C	D	E	F	G	CH	CH1	Gr
SA281818	1/8	14	22	8	1/8	8				
SA281414	1/4	18	28	10	1/4	10				



SA29 REPARTIDOR EN CRUZ HEMBRA

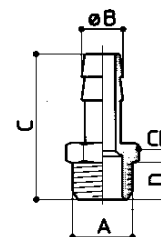


CODIGO	A	B	C	D	E	F	MATER.	CH1	Gr
SA2900M5	M5	20	14	3,2	10	-	ALUMINIO		
SA290018	1/8	25	-	4,5	16	-	ALUMINIO		
SA290014	1/4	40	-	5,5	20	-	ALUMINIO		
SA290038	3/8	50	34	5,5	25	-	ALUMINIO		
SA290012	1/2	50	34	5,5	30	-	ALUMINIO		
SA290034	3/4	60	45	5,5	35	-	ALUMINIO		



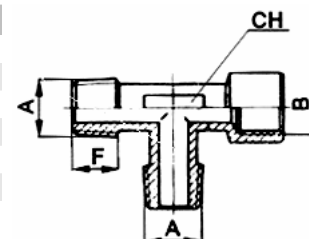
SA30 ESPIGA MANGUERA CILINDRICA MACHO

CODIGO	A	B	C	D	E	F	G	CH	CH1	Gr
SA3025M5	M5	2,5	16	5				8		
SA3003M5	M5	3	16	5				8		
SA3004M5	M5	4	16	5				8		
SA3045M5	M5	4,5	21	4				8		
SA3006M5	M5	6	21	4				8		
SA3006M6	M6	6	21	4				8		
SA300618	1/8	6	29,5	6				12		
SA300718	1/8	7	29,5	6				12		
SA300818	1/8	8	29,5	6				12		
SA300918	1/8	9	29,5	6				12		
SA301018	1/8	10	30,5	6				12		
SA301218	1/8	12	26	6,5				12		
SA300614	1/4	6	32	8				14		
SA300714	1/4	7	32	8				14		
SA300814	1/4	8	32	8				14		
SA300914	1/4	9	32	8				14		
SA301014	1/4	10	33	8				14		
SA301214	1/4	12	33	8				14		
SA301414	1/4	14	35	8				17		
SA300838	3/8	8	33	9				19		
SA300938	3/8	9	33	9				19		
SA301038	3/8	10	34	9				19		
SA301238	3/8	12	34	9				19		
SA301438	3/8	14	36	9				19		
SA301638	3/8	16	38	9				19		
SA301738	3/8	17	38	9				19		
SA300812	1/2	8	42	10				24		
SA301012	1/2	10	42	10				24		
SA301212	1/2	12	35,5	10				22		
SA301412	1/2	14	33	8				14		
SA301612	1/2	16	42	10				24		
SA301712	1/2	17	39,5	10				22		
SA302012	1/2	20	39,5	10				22		
SA301834	3/4	18	42	10				30		
SA302034	3/4	20	47	12				30		
SA302534	3/4	25	53	12				30		
SA302010	1"	20	-	-				-		
SA302510	1"	25	59	11				28		
SA303010	1"	30	-	-				-		
SA3040112	1"1/2	40	-	-				-		



SA31 T LATERAL HEMBRA CONICA MACHO/MACHO

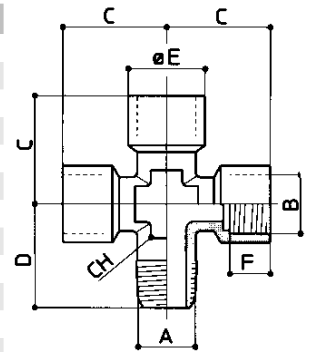
CODIGO	A	B	C	D	E	F	G	CH	CH1	Gr
SA31M5M5	M5	M5				5		8		
SA311818	1/8	1/8				8		10		
SA311414	1/4	1/4				11		13		
SA313838	3/8	3/8				11,5		17		
SA311212	1/2	1/2				14		21		
SA313434	3/4	3/4				-		-		
SA311010	1"	1"				-		-		



SA32 CRUZ CONICA MACHO/HEMBRA/HEMBRA/HEMBRA



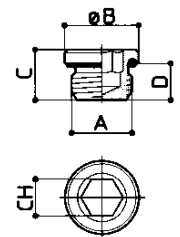
CODIGO	A	B	C	D	E	F	G	CH	CH1	Gr
SA321818	1/8	1/8	18,5	18,5	-	8		10		
SA321414	1/4	1/4	23,5	23,5	-	11		13		
SA323838	3/8	3/8	26	26	-	11,5		17		
SA321212	1/2	1/2	31	31	-	14		21		



SA33 TAPON CILINDRICO HEXAGONAL INTERIOR /OR



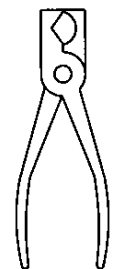
CODIGO	A	B	C	D	E	F	G	CH	CH1	Gr
SA3300M5	M5	8	6	4				2,5		
SA330018	1/8	14	9	6				5		
SA330014	1/4	16	11	8				8		
SA330038	3/8	20	14	10				10		
SA330012	1/2	25	16	12				12		



SA34 CORTATUBOS



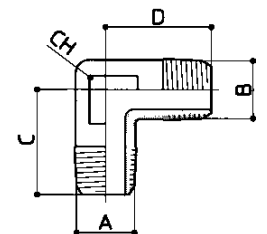
CODIGO	Ø TUBO	D	E	F	G	CH	CH1	Gr
SA340012	0 - 12							
SA340025	0 - 25							



SA35 CODO CONICO MACHO



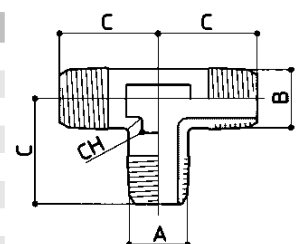
CODIGO	A	B	C	D	E	F	G	CH	CH1	Gr
SA35M5M5	M5	M5	14	14				8		
SA351818	1/8	1/8	18,5	18,5				10		
SA351418	1/4	1/8	21,5	19				10		
SA351414	1/4	1/4	23,5	23,5				13		
SA353838	3/8	3/8	26	26				17		
SA351212	1/2	1/2	31	31				21		
SA353434	3/4	3/4	33	33				27		
SA351010	1"	1"	39	39				30		



SA36 T CONICA MACHO



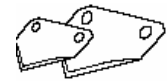
CODIGO	A	B	C	D	E	F	G	CH	CH1	Gr
SA36M5M5	M5	M5	14					8		
SA361818	1/8	1/8	18,5					10		
SA361414	1/4	1/4	23,5					13		
SA363838	3/8	3/8	26					17		
SA361212	1/2	1/2	31					21		
SA363434	3/4	3/4	33					22		
SA361010	1"	1"	39					30		



SA37 CUCHILLA RECAMBIO (SA34)



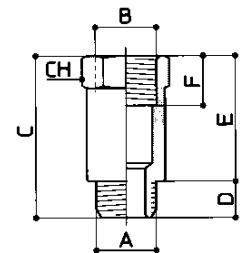
CODIGO	Ø TUBO	E	F	G	CH	CH1	Gr
SA370012	0 - 12						
SA370025	0 - 25						



SA39 PROLONGADOR CILINDRICO MACHO/HEMBRA



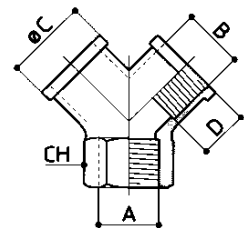
CODIGO	A	B	C	D	E	F	G	CH	CH1	Gr
SA391822	1/8	1/8	22	6	16	8		14		
SA391823	1/8	1/8	23	-	-	-		12		
SA391826	1/8	1/8	26	7	-	-		14		
SA391829	1/8	1/8	29	7	-	-		14		
SA391832	1/8	1/8	32	7	-	-		14		
SA391842	1/8	1/8	42	6	36	8		14		
SA391843	1/8	1/8	43	7	-	-		14		
SA391844	1/8	1/8	44	-	-	-		12		
SA391851	1/8	1/8	51	6	45	8		14		
SA391428	1/4	1/4	28	7	20	10		16		
SA391435	1/4	1/4	35	8	27	11		17		
SA391445	1/4	1/4	45	9	37	12		16		
SA391451	1/4	1/4	51	8	43	11		17		
SA393841	3/8	3/8	41	9	32	12		22		
SA391236	1/2	1/2	36	10	26	12		24		
SA393450	3/4	3/4	50	12	38	12		30		
SA391050	1"	1"	50	12	38	12		38		



SA40 REPARTIDOR EN "Y" HEMBRA/HEMBRA/HEMBRA



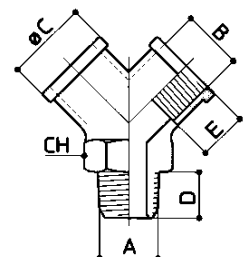
CODIGO	A	B	C	D	E	F	G	CH	CH1	Gr
SA401818	1/8	1/8	-	-				13		
SA401414	1/4	1/4	-	-				17		
SA403838	3/8	3/8	-	-				20		
SA401212	1/2	1/2	-	-				25		



SA41 REPARTIDOR EN "Y" CONICO MACHO/HEMBRA/HEMBRA



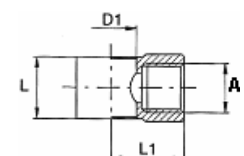
CODIGO	A	B	C	D	E	F	G	CH	CH1	Gr
SA411818	1/8	1/8	-	8	8			13		
SA411414	1/4	1/4	-	11	11			17		
SA413838	3/8	3/8	-	11,5	11,5			20		
SA411212	1/2	1/2	-	14	14			25		



SA42 ORIENTABLE HEMBRA



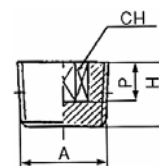
CODIGO	A	B	D1	L	L1	F	G	CH	CH1	Gr
SA42M5M5	M5		-	10	13					
SA421818	1/8		9,9	14,5	22					
SA421414	1/4		13,3	14,5	25,5					



SA43 TAPON CONICO HEXAGONO INTERIOR



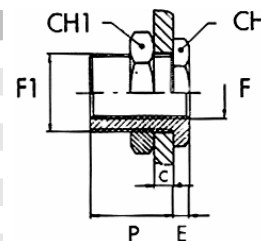
CODIGO	A	P	H	E	F	G	CH	CH1	Gr
SA430018	1/8	3,5	7,7				5		
SA430014	1/4	5	9,5				6		
SA430038	3/8	6,5	10				8		
SA430012	1/2	-	13				10		



SA44 PASAMUROS



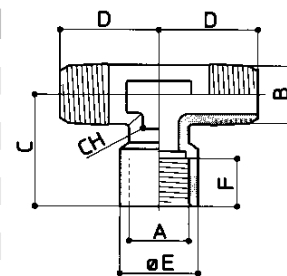
CODIGO	F	F1	C	P	E	F	G	CH	CH1	Gr
SA44M5M10	M5	M10x1	7	10,5	3,5			14	14	
SA4418M16	1/8	M16	10	14	4			19	22	
SA4414M20	1/4	M20	16	21	4			24	27	
SA4438M26	3/8	M26	15	21	5			30	32	
SA4412M28	1/2	M28	21	27	6			32	36	



SA45 T CENTRAL HEMBRA CONICA MACHO/MACHO



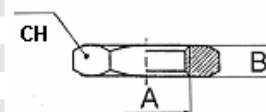
CODIGO	A	B	C	D	E	F	G	CH	CH1	Gr
SA45M5M5	M5	M5	8,5	14	-	-		8		
SA451818	1/8	1/8	21	18,5	-	8		10		
SA451414	1/4	1/4	25,5	23,5	-	11		13		
SA453838	3/8	3/8	28	26	-	11,5		17		
SA451212	1/2	1/2	33,5	31	-	14		21		
SA453434	3/4	3/4	-	-	-	-		-		
SA451010	1"	1"	-	-	-	-		-		



SA46 TUERCA HEXAGONAL ESTRECHA



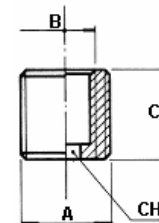
CODIGO	A	B	C	D	E	F	G	CH	CH1	Gr
SA4625M5	M5	25						-		
SA463018	1/8	30						14		
SA463014	1/4	30						17		
SA463538	3/8	35						19		
SA464012	1/2	40						24		
SA464534	3/4	45						30		
SA465010	1"	50						38		
SA4645M10	M10	45						14		
SA4645M12	M12	45						17		
SA4650M14	M14	50						17		
SA4650M16	M16	50						19		
SA4650M20	M20	50						24		
SA4645M22	M22	45						25		
SA4650M22	M22	50						25		
SA4656M26	M26	56						-		



SA47 REDUCCION INTERNA



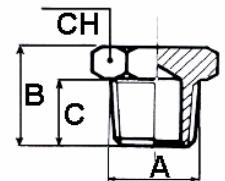
CODIGO	A	B	C	D	E	F	G	CH	CH1	Gr
SA4718M5	1/8	M5	8					8		
SA471418	1/4	1/8	8					-		
SA473818	3/8	1/8	9					6		
SA473814	3/8	1/4	9					-		
SA471214	1/2	1/4	10					8		
SA471238	1/2	3/8	10					-		
SA473412	3/4	1/2	14					-		
SA471034	1"	3/4	14					16		



SA48 TAPON CONICO CABEZA HEXAGONAL MACHO



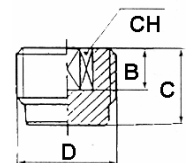
CODIGO	A	B	C	D	E	F	G	CH	CH1	Gr
SA480018	1/8	11,5	7					10		
SA480014	1/4	15	10,5					14		
SA480038	3/8	15	10,5					17		
SA480012	1/2	17,5	11,5					22		
SA480034	3/4	21	14,5					27		
SA480010	1"	22	16					36		



SA49 TAPON CILINDRICO HEXAGONO INTERIOR



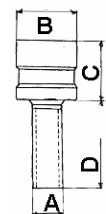
CODIGO	D	B	C	D	E	F	G	CH	CH1	Gr
SA490018	1/8	3,5	7					5		
SA490014	1/4	5	10					6		
SA490038	3/8	6,5	10					8		
SA490012	1/2	-	13					10		
SA490034	3/4	-	-					-		



SA50 TAPON ACOPLAMIENTO INSTANTANEO



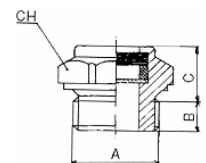
CODIGO	A	B	C	D	E	F	G	CH	CH1	Gr
SA500004	4	7	10	28						
SA500005	5	7	10	32						
SA500006	6	8	10	34						
SA500008	8	10	14	34						
SA500010	10	12	14	36						
SA500012	12	14	16	44						
SA500014	14	16	19	46						



SA51 TAPON DE NIVEL



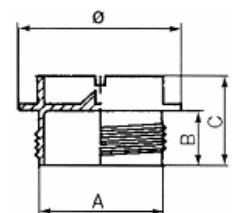
CODIGO	A	B	C	D	E	F	G	CH	CH1	Gr
SA510014	1/4	8	9					17		
SA510038	3/8	9	10					22		
SA510012	1/2	9	11					27		
SA510034	3/4	11	11					32		
SA510010	1"	10	12					40		



SA52 TAPON PLASTICO CILINDRICO MACHO



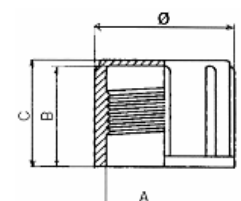
CODIGO	A	B	C	D	E	F	G	Ø	CH1	Gr
SA520018	1/8	7,5	16					17		
SA520014	1/4	7,5	16					20,6		
SA520038	3/8	7,5	16					20,6		
SA520012	1/2	7,5	16					26,6		
SA520034	3/4	7,5	16					26,6		
SA520010	1"	7,5	16					38,6		



SA53 TAPON DE PLASTICO HEMBRA

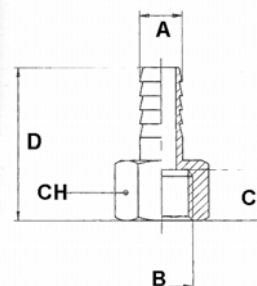


CODIGO	A	B	C	D	E	F	G	Ø	CH1	Gr
SA530018	1/8	10	11					11,9		
SA530014	1/4	12	13					16,3		
SA530038	3/8	12	13,5					18,3		
SA530012	1/2	14,2	15,7					24		
SA530034	3/4	14	15,5					28,6		
SA530010	1"	23,5	24,1					36,8		



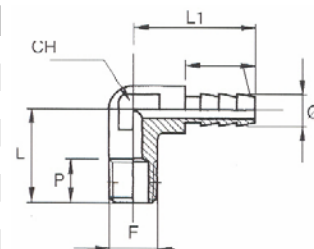
SA54 ESPIGA MANGUERA HEMBRA

CODIGO	A	B	C	D	E	F	G	CH	CH1	Gr
SA540618	6	1/8	8	30,5				14		
SA540718	7	1/8	-	-				-		
SA540818	8	1/8	8	27				12		
SA540918	9	1/8	-	-				-		
SA540614	6	1/4	11	33				17		
SA540714	7	1/4	11	33				17		
SA540814	8	1/4	11	33				17		
SA540914	9	1/4	11	35				17		
SA541014	10	1/4	11	35				17		
SA541214	12	1/4	11	35				17		
SA540938	9	3/8	12	36				19		
SA541038	10	3/8	12	36				19		
SA541238	12	3/8	12	36				19		
SA541438	14	3/8	12	38				19		
SA541738	17	3/8	12	38				19		
SA541012	10	1/2	14	42				24		
SA541212	12	1/2	14	42				24		
SA541312	13	1/2	-	-				-		
SA541412	14	1/2	14	42				24		
SA541712	17	1/2	14	42				24		
SA542012	20	1/2	14	42				24		



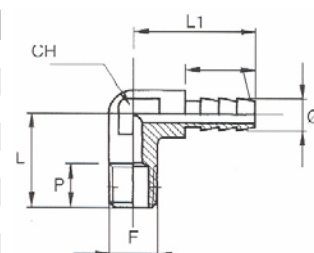
SA55 CODO ESPIGA MANGUERA CONICA MACHO

CODIGO	Ø	F	P	L	L1	F	G	CH	CH1	Gr
SA550618	6	1/8	8	18,5	21,5			9		
SA550718	7	1/8	8	19	22,5			10		
SA550818	8	1/8	8	19	22,5			10		
SA550918	9	1/8	8	20	24			11		
SA551018	10	1/8	-	-	-			-		
SA550614	6	1/4	11	23	23			9		
SA550714	7	1/4	11	23	23			9		
SA550814	8	1/4	11	22	22,5			10		
SA550914	9	1/4	11	22	24			11		
SA551014	10	1/4	-	-	-			-		



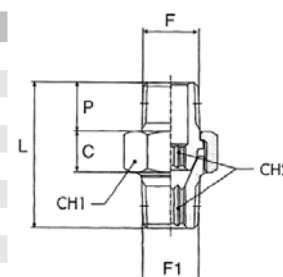
SA56 CODO ESPIGA MANGUERA CONICA MACHO LARGO

CODIGO	Ø	F	P	L	L1	F	G	CH	CH1	Gr
SA560618	6	1/8	8	22	32,5			9		
SA560718	7	1/8	8	22	32,5			9		
SA560614	6	1/4	11	23	32,5			9		
SA560714	7	1/4	11	23	32,5			9		



SA57 RECTO MACHO CONICO ORIENTABLE

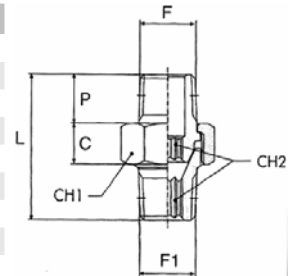
CODIGO	F	F1	C	P	L	F	G	CH1	CH2	Gr
SA571818	1/8	1/8	8,5	9	27			15	5	
SA571418	1/4	1/8	-	-	-			-	-	
SA571414	1/4	1/4	9,5	11,5	33,5			19	6	
SA573814	3/8	1/4	-	-	-			-	-	
SA573838	3/8	3/8	10	13	36			22	8	
SA571238	1/2	3/8	-	-	-			-	-	
SA571212	1/2	1/2	12	15,5	45			27	12	
SA573434	3/4	3/4	-	-	-			-	-	
SA571010	1"	1"	-	-	-			-	-	



SA58 RECTO MACHO/HEMBRA CONICO ORIENTABLE



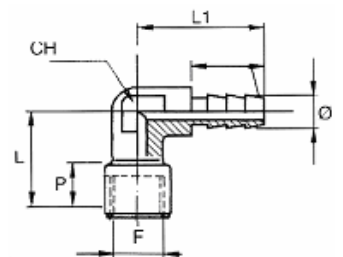
CODIGO	F	F1	C	P	L	F	G	CH1	Gr
SA581818	1/8	1/8	9	18	30			15	
SA581414	1/4	1/4	10	21	32			19	
SA583838	3/8	3/8	10	23	41			22	
SA581212	1/2	1/2	12	28	47			27	



SA59 CODO ESPIGA MANGUERA HEMBRA



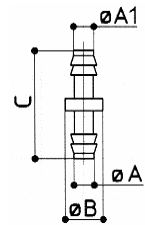
CODIGO	Ø	F	P	L	L1	F	G	CH	CH1	Gr
SA590618	6	1/8	8	22	22,5			10		
SA590718	7	1/8	8	22	22,5			10		
SA590818	8	1/8	8	22	22,5			10		
SA590918	9	1/8	8	22	24			11		
SA591018	10	1/8	-	-	-			-		
SA590614	6	1/4	10	23	25			11		
SA590714	7	1/4	10	23	25			11		
SA590814	8	1/4	10	23	25			11		
SA590914	9	1/4	10	23	25			11		



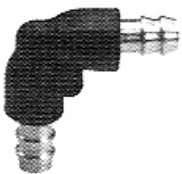
SA60 ESPIGA INTERMEDIA



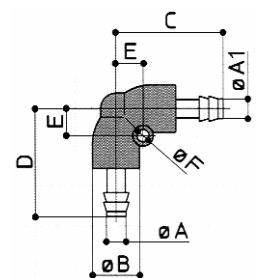
CODIGO	A	A1	B	C	D	E	F	CH	CH1	Gr
SA600202	2	2	5	20						2
SA600203	3	2	6	20						2
SA600303	3	3	6	20						2
SA600304	4	3	7	21						2
SA600404	4	4	7	22						3
SA600406	6	4	9	22						3
SA600606	6	6	9	22						3



SA61 CODO ESPIGA INTERMEDIO



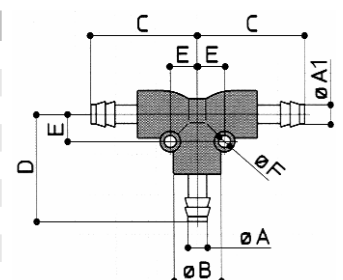
CODIGO	A	A1	B	C	D	E	F	CH	CH1	Gr
SA610202	2	2	10	22	22	5,7	2,7			4
SA610303	3	3	10	22	22	5,7	2,7			5
SA610404	4	4	10	22	22	5,7	2,7			6
SA610606	6	6	10	22	22	5,7	2,7			7



SA62 T ESPIGA INTERMEDIA



CODIGO	A	A1	B	C	D	E	F	CH	CH1	Gr
SA620202	2	2	10	22	22	5,7	2,7			7
SA620303	3	3	10	22	22	5,7	2,7			8
SA620404	4	4	10	22	22	5,7	2,7			10
SA620606	6	6	10	22	22	5,7	2,7			11



SA63 CODO CIL. HEMBRA GIRATORIO LLAVE ALLEN



CODIGO	A	B	C	D	E	F	G	CH	CH1	Gr
SA63M5M5	M5	M5	11,5	4	13	9	10	2,5	10	12
SA631818	1/8	1/8	13,5	5	23	11	14	4	14	28
SA631814	1/8	1/4	13,5	5	28	11	16	4	16	37
SA631414	1/4	1/4	15	6	28	14,3	16	4	16	39
SA631418	1/4	1/8	15	6	23	14,3	14	4	14	30

