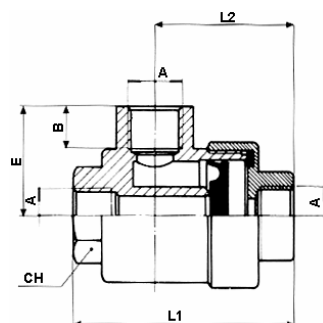


## VSR VALVULA DE ESCAPE RAPIDO



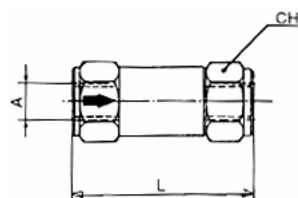
CODIGO	A	B	L1	L2	E	F	G	CH	CH1	Gr
VSR M5	M5	1	25	17,5	10			10		
VSR 1/8	1/8	6	42	27	19			14		
VSR 1/4	1/4	10,5	54	35	25,5			17		
VSR 3/8	3/8	11	55	35	26			21		
VSR 1/2	1/2	12	72,5	43	31,5			26		
VSR 3/4	3/4	14,5	88,5	53,3	37			32		
VSR-M 3/4	3/4	13	118	70	47,5			46		
VSR-M 1	1	13	118	70	47,5			46		



## VU VALVULA ANTIRRETORNO



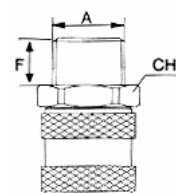
CODIGO	A	L	C	D	E	F	G	CH	CH1	Gr
VU M5	M5	25						8		
VU 1/8	1/8	35						14		
VU 1/4	1/4	40						17		
VU 3/8	3/8	45						22		
VU 1/2	1/2	50						25		
VU 3/4	3/4									
VU 1	1									



## VSC VALVULA DE ESCAPE DE CONDENSACIONES



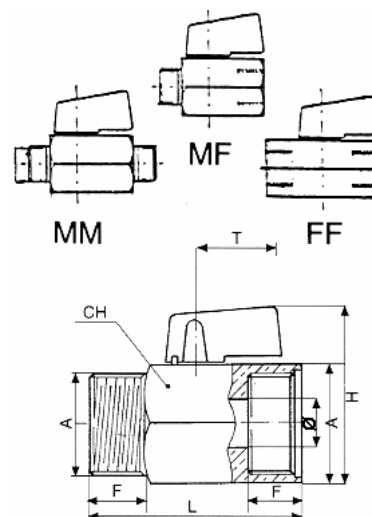
CODIGO	A	F	C	D	E	G	CH	CH1	Gr
VSC 1/4	1/4	9					16		



## MVS MINIVALVULAS DE ESFERA



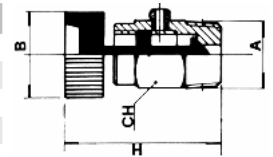
CODIGO	Ø	A	F	L	H	T	G	CH	Gr
MVS 1/8 MF	1/8	18	8	40	37	23		21	
MVS 1/8 FF	1/8	18	8	40	37	23		21	
MVS 1/8 MM	1/8	18	10	49	37	23		21	
MVS 1/4 MF	1/4	18	10	39	37	23		21	
MVS 1/4 FF	1/4	18	10	39	37	23		21	
MVS 1/4 MM	1/4	18	10	50	37	23		21	
MVS 3/8 MF	3/8	18	10	40	37	23		21	
MVS 3/8 FF	3/8	18	10	42	37	23		21	
MVS 3/8 MM	3/8	18	10	50	37	23		21	
MVS 1/2 MF	1/2	19	10	45	42	23		25	
MVS 1/2 FF	1/2	19	10	46	42	23		25	
MVS 1/2 MM	1/2	19	10	47	42	23		25	
MVS 3/4 FF	3/4	24	15	54	47	23		30	
MVS 3/4 MF	3/4	24	15	54	47	23		30	
MVS 1 MF	1"	30	15	63	54	23		37	



## R GRIFO



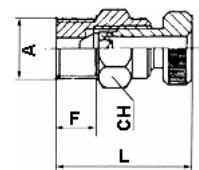
CODIGO	A	B	H	D	E	F	G	CH	CH1	Gr
R 1/4	1/4	17	30					13		
R 3/8	3/8	17	30					13		



## RSZ GRIFO DE PURGA CON POMO



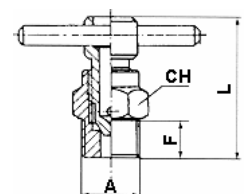
CODIGO	A	F	L	D	E	G	CH	CH1	Gr
RSZ 1/8	1/8	6	16-18				12		
RSZ 1/4	1/4	7,5	17-19				14		
RSZ 3/8	3/8	7,5	17-19				17		
RSZ 1/2	1/2	9	15-17				22		



## RSF GRIFO DE PURGA DE PALOMETA



CODIGO	A	F	L	D	E	G	CH	CH1	Gr
RSF 1/4	1/4	7,5	21-23				14		
RSF 3/8	3/8	7,5	21-23				17		
RSF 1/2	1/2	9	20-22				22		

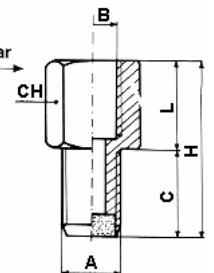


## AM AMORTIGUADOR VIBRACIONES PARA MANOMETRO



CODIGO	A	B	C	L	H	F	G	CH	Gr
AM 1/8 A-M-B	1/8	1/8	10	15	25			14	
AM 1/4 A-M-B	1/4	1/4	15	21	36			19	
AM 3/8 A-M-B	3/8	3/8	22	23	45			27	
AM 1/2 A-M-B	1/2	1/2	27	23	50			30	

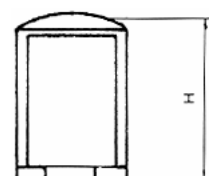
TYPE:  
B: 0-20 Bar  
M: 20-100 Bar  
A: 100 Bar



## OS ORIENTADOR DE ESCAPE

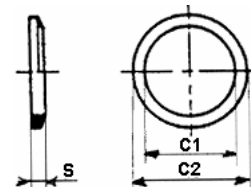


CODIGO	X	A	B	H	E	F	G	CH	CH1	Gr
OS 1/8	1/8	8	19,5	29						
OS 1/4	1/4	11	23,5	33						
OS 3/8	3/8	14	26,5	41						
OS 1/2	1/2	17	33,5	51						
OS 3/4	3/4	23	40	47						
OS 1	1"	29	48	50						



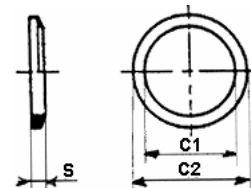
## RA ARANDELA DE ALUMINIO

CODIGO	X	C1	C2	S	E	F	G	CH	CH1	Gr
RA M5	M5	5	9	1						
RA M8	M8	8								
RA M10	M10	10								
RA M12	M12	12								
RA M14	M14	14								
RA M16	M16	16								
RA M22	M22	22								
RA 1/8	1/8	10	14	1,5						
RA 1/4	1/4	13,3	19	1,5						
RA 3/8	3/8	16,7	22	1,5						
RA 1/2	1/2	21,5	27	1,5						
RA 3/4	3/4	27	33	1,5						
RA 1	1	33,6	41	1,5						
RA 1 1/4	1"1/4	42,5	54	1,5						
RA 1 1/2	1"1/2	48	60	1,5						
RA 2	2"	60	71,8	1,5						



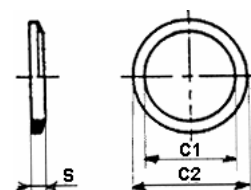
## RR ARANDELA DE COBRE

CODIGO	X	C1	C2	S	E	F	G	CH	CH1	Gr
RR M5	M5	8	8,5	1						
RR 1/8	1/8	10,1	14	1,5						
RR 1/4	1/4	13,3	19	1,5						
RR 3/8	3/8	16,7	22	1,5						
RR 1/2	1/2	21,3	27	1,5						
RR 3/4	3/4	26,7	32	1,5						
RR 1	1	33,6	41	1,5						
RR 1 1/4	1 1/4	42,5	54	1,5						
RR 1 1/2	1 1/2	48	60	1,5						
RR 2	2	60	71,8	1,5						



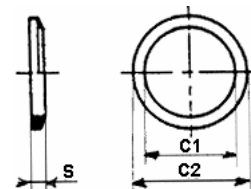
## RN ARANDELA DE NYLON

CODIGO	X	C1	C2	S	E	F	G	CH	CH1	Gr
RN M5	M5	5,1	9	1,5						
RN 1/8	1/8	9,8	14	1,5						
RN 1/4	1/4	13,2	18	1,8						
RN 3/8	3/8	16,7	21	1,8						
RN 1/2	1/2	21,1	26	2,5						
RN 3/4	3/4	26,7	32	1,5						
RN 1	1	33,6	41	1,5						
RN 1 1/4	1 1/4	42,5	54	1,5						
RN 1 1/2	1 1/2	48	60	1,5						
RN 2	2	60	71,8	1,5						



## RF ARANDELA DE FIBRA

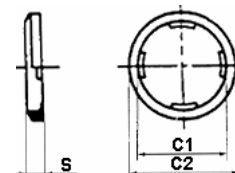
CODIGO	X	C1	C2	S	E	F	G	CH	CH1	Gr
RF M5	M5	8	8,5	1						
RF 1/8	1/8	10,1	14	1,5						
RF 1/4	1/4	13,3	19	1,5						
RF 3/8	3/8	16,7	22	1,5						
RF 1/2	1/2	21,3	27	1,5						
RF 3/4	3/4	26,7	32	1,5						
RF 1	1	33,6	41	1,5						
RF 1 1/4	1 1/4	42,5	54	1,5						
RF 1 1/2	1 1/2	48	60	1,5						
RF 2	2	60	71,8	1,5						



## RND ARANDELA DE NYLON CON ENCLAVAMIENTO



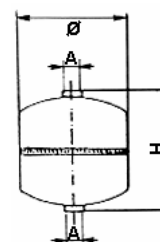
CODIGO	X	C1	C2	S	E	F	G	CH	CH1	Gr
RND M5	M5	5,3	8,5	1,5						
RND M6	M6	-	-	-						
RND 1/8	1/8	10,3	14,3	2						
RND 1/4	1/4	13,6	18	2						
RND 3/8	3/8	17	22	2						
RND 1/2	1/2	21,8	26	2,5						
RND 3/4	3/4	27	33	2,5						
RND 1	1	33	41	2,5						



## BC DEPOSITO CON DOS SALIDAS



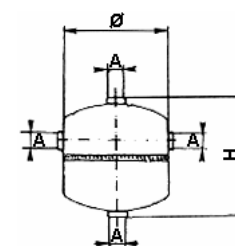
CODIGO	Litros	A	Ø	H	E	F	G	CH	CH1	Gr
BC 1	1 L	1/2	85	225						
BC 2,5	2,5 L	1/2	160	166						
BC 5	5 L	1/2	210	175						
BC 7	7 L	1/2	210	240						
BC 12	12 L	1/2	229	365						



## BCS DEPOSITO CON CUATRO SALIDAS



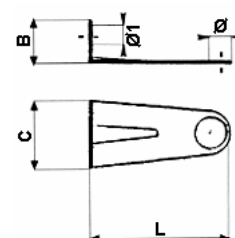
CODIGO	Litros	A	Ø	H	E	F	G	CH	CH1	Gr
BCS 1	1 L	1/2	85	225						
BCS 2,5	2,5 L	1/2	160	166						
BCS 5	5 L	1/2	210	175						
BCS 7	7 L	1/2	210	240						
BCS 12	12 L	1/2	229	365						



## STAFFA ESCUADRA PARA DEPOSITO



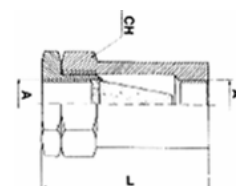
CODIGO	L	B	C	Ø	Ø1	F	G	CH	CH1	Gr
STAFFA	146	35,5	59,5	21	7					



## FL-FF FILTRO EN LINEA HEMBRA/HEMBRA



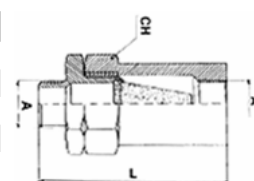
CODIGO	A	L	C	D	E	F	G	CH	CH1	Gr
FL-FF 1/8	1/8	35						17		
FL-FF 1/4	1/4	41						19		
FL-FF 3/8	3/8	53						24		
FL-FF 1/2	1/2	63						30		



## FL-MF FILTRO EN LINEA MACHO/HEMBRA



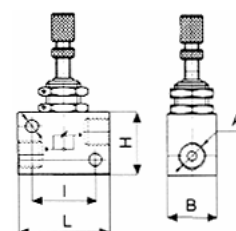
CODIGO	A	L	C	D	E	F	G	CH	CH1	Gr
FL-MF 1/8	1/8	41						17		
FL-MF 1/4	1/4	49						19		
FL-MF 3/8	3/8	63						24		
FL-MF 1/2	1/2	73						30		



## RFL-U REGULADOR DE FLUJO UNIDIRECCIONAL



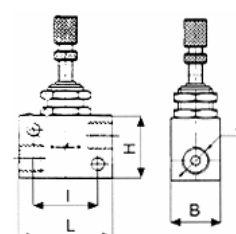
CODIGO	A	B	H	I	L	F	G	CH	CH1	Gr
RFL-U 1/8	1/8	17	22	22	32					
RFL-U 1/4	1/4	22	32	30	39					
RFL-U 3/8	3/8	-	-	-	-					
RFL-U 1/2	1/2	-	-	-	-					
RFL-U 3/4	3/4	35	65	74	95					
RFL-U 1	1	45	65	74	95					



## RFL-B REGULADOR DE FLUJO BIDIRECCIONAL



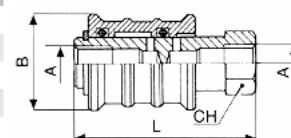
CODIGO	A	B	H	I	L	F	G	CH	CH1	Gr
RFL-B 1/8	1/8	17	22	22	32					
RFL-B 1/4	1/4	22	32	30	39					
RFL-B 3/8	3/8	-	-	-	-					
RFL-B 1/2	1/2	-	-	-	-					



## SV26 VALVULA DE CORREDERA



CODIGO	A	B	L	D	E	F	G	CH	CH1	Gr
SV2600M5	M5	13	31					9		
SV260018	1/8	28	53					17		
SV260014	1/4	30	58					19		
SV260038	3/8	35	68					22		
SV260012	1/2	40	80					27		
SV260034	3/4	48	80					36		



## PT PINZA CORTATUBO



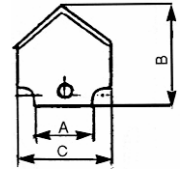
CODIGO	L	B	C	D	E	F	G	CH	CH1	Gr
PT	81									



## L HOJA DE RECAMBIO



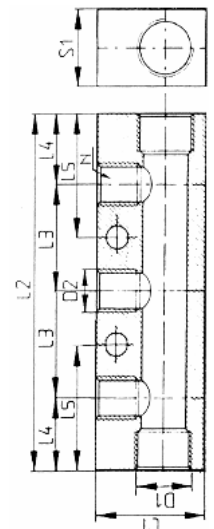
CODIGO	A	B	C	D	E	F	G	CH	CH1	Gr
L	11,2	17,6	19,3							



## C COLECTORES MULTIPLES SALIDA SIMPLE



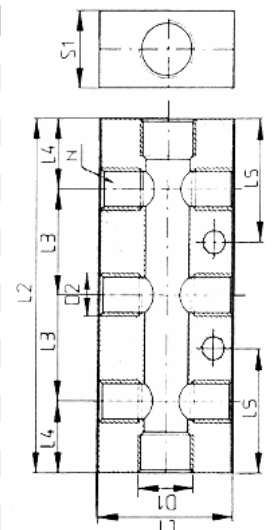
CODIGO	D2	D1	L1	L2	L3	L4	L5	S1	CH1	Gr
C.2 18 14	1/8	1/4	-	-	-	-	-	-		
C.2 14 38	1/4	3/8	-	-	-	-	-	-		
C.2 14 12	1/4	1/2	41	80	37	22	-	28		
C.2 38 12	3/8	1/2	-	-	-	-	-	-		
C.3 18 14	1/8	1/4	30	90	30	15	-	20		
C.3 14 38	1/4	3/8	30	108	36	18	-	20		
C.3 14 12	1/4	1/2	-	-	-	-	-	-		
C.3 38 12	3/8	1/2	-	-	-	-	-	-		
C.4 18 14	1/8	1/4	30	120	30	15	-	20		
C.4 14 38	1/4	3/8	30	144	36	18	-	20		
C.4 14 12	1/4	1/2	-	-	-	-	-	-		
C.4 38 12	3/8	1/2	-	-	-	-	-	-		
C.5 18 14	1/8	1/4	30	150	30	15	-	20		
C.5 14 38	1/4	3/8	30	180	36	18	-	20		
C.5 14 12	1/4	1/2	-	-	-	-	-	-		
C.5 38 12	3/8	1/2	-	-	-	-	-	-		
C.6 18 14	1/8	1/4	30	180	30	15	-	20		
C.6 14 38	1/4	3/8	30	216	36	18	-	20		
C.6 14 12	1/4	1/2	-	-	-	-	-	-		
C.6 38 12	3/8	1/2	-	-	-	-	-	-		



## C COLECTORES MULTIPLES SALIDA DOBLE



CODIGO	D2	D1	L1	L2	L3	L4	L5	S1	CH1	Gr
C.2 18 18 14	1/8	1/4	30	60	30	15	30	20		
C.2 14 14 38	1/4	3/8	40	72	37	13	35	20		
C.2 14 14 12	1/4	1/2	-	-	-	-	-	-		
C.2 38 38 12	3/8	1/2	-	-	-	-	-	-		
C.3 18 18 14	1/8	1/4	30	90	30	15	30	20		
C.3 14 14 38	1/4	3/8	30	108	36	18	36	20		
C.3 14 14 12	1/4	1/2	40	116	36	22	40	28		
C.3 38 38 12	3/8	1/2	-	-	-	-	-	-		
C.4 18 18 14	1/8	1/4	30	120	31	15	30	20		
C.4 14 14 38	1/4	3/8	-	-	-	-	-	-		
C.4 14 14 12	1/4	1/2	40	152	36	22	40	28		
C.4 38 38 12	3/8	1/2	-	-	-	-	-	-		
C.5 18 18 14	1/8	1/4	30	150	30	15	30	20		
C.5 14 14 38	1/4	3/8	30	180	36	18	36	20		
C.5 14 14 12	1/4	1/2	40	188	36	22	40	28		
C.5 38 38 12	3/8	1/2	-	-	-	-	-	-		



## CINTA TEFLON



CODIGO	mts	B	C	D	E	F	G	CH	Gr
CINTA TEFLON	12								

## VALVULAS DE SEGURIDAD

### VALVULA DE SEGURIDAD CON TARADO LIBRE



CODIGO	CARACTERISTICAS	
	ACOPLAMIENTO	BAR
NVSFREE18T...	1/8"	0-16
NVSFREE14T...	1/4"	0-16
NVSFREE38T...	3/8"	0-18
NVSFREE12T...	1/2"	0-18
NVSFREE34T...	3/4"	0-18
NVSFREE1T...	1"	0-18

campo de pretarado  
0 - 5 bar  
6 - 12 bar  
13 - 18 bar

Ej.: NVSFREE18T612B Válvula 1/8" Gas regulable de 6 a 12 bars

### VALVULA DE SEGURIDAD TARADA FIJA EXENTA



CODIGO	CARACTERISTICAS	
	ACOPLAMIENTO	BAR
NVS30018...	1/8"	0-16
NVS30014...	1/4"	0-16
NVS30038...	3/8"	0-18
NVS30012...	1/2"	0-18
NVS30034...	3/4"	0-18
NVS3001...	1"	0-18

"EXENTA"  
sin certificado PED

Ej.: NVS30019B Válvula 1" Gas regulada a 9 bars

### VALVULA DE SEGURIDAD TARADA FIJA C/ ANILLA EXENTA



CODIGO	CARACTERISTICAS	
	ACOPLAMIENTO	BAR
NVS40018...A	1/8"	0-16
NVS40014...A	1/4"	0-16
NVS40038...A	3/8"	0-18
NVS40012...A	1/2"	0-18
NVS40034...A	3/4"	0-18
NVS4001...A	1"	0-18

"EXENTA"  
sin certificado PED

sustituir los puntos(...) por el tarado de la válvula (ej: 8 bar = 8B)

Ej.: NVS400345BA Válvula 3/4" Gas regulada a 5 bars con anilla

### VALVULA DE SEGURIDAD TARADA FIJA CATEGORIA IV



CODIGO	CARACTERISTICAS	
	ACOPLAMIENTO	BAR
NVS30018...C4	1/8"	0-16
NVS30014...C4	1/4"	0-16
NVS30038...C4	3/8"	0-18
NVS30012...C4	1/2"	0-18

"CATEGORIA IV"  
con certificado PED

Ej.: NVS300143BC4 Válvula 1/4" Gas regulada a 3 bars

### VALVULA DE SEGURIDAD TARADA FIJA CATEGORIA IV C/ ANILLA



CODIGO	CARACTERISTICAS	
	ACOPLAMIENTO	BAR
NVS40018...AC4	1/8"	0-16
NVS40014...AC4	1/4"	0-16
NVS40038...AC4	3/8"	0-18
NVS40012...AC4	1/2"	0-18
NVS40034...AC4	3/4"	0-18
NVS4001...AC4	1"	0-18

"CATEGORIA IV"  
con certificado PED

Ej.: NVS400384BAC4 Válvula 3/8" Gas regulada a 4 bars con anilla

Todas las válvulas de "CATEGORIA IV" vienen acompañadas de su correspondiente certificado PED