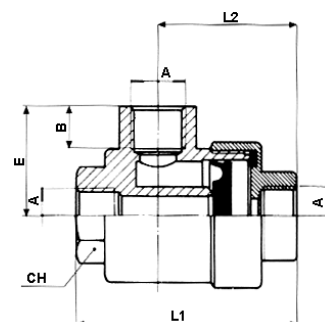


## VSR VALVULA DE ESCAPE RAPIDO



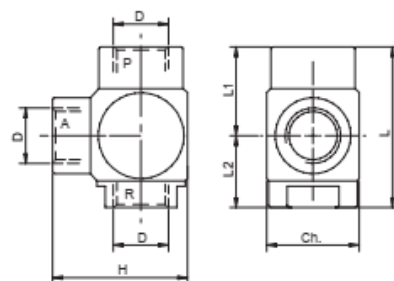
CODIGO	A	B	L1	L2	E	F	G	CH	CH1	Gr
VSR M5	M5	1	25	17,5	10			10		
VSR 1/8	1/8	6	42	27	19			14		
VSR 1/4	1/4	10,5	54	35	25,5			17		
VSR 3/8	3/8	11	55	35	26			21		
VSR 1/2	1/2	12	72,5	43	31,5			26		
VSR 3/4	3/4	14,5	88,5	53,3	37			32		
VSR 1	1"									



## VSR VALVULA DE ESCAPE RAPIDO EN ACERO INOX



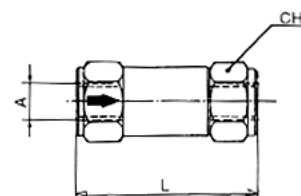
CODIGO	D	CH	L	L1	L2	H	Gr
VSRX 1/8	1/8	22	37.5	21	16.5	32	
VSRX 1/4	1/4	22	37.5	21	16.5	32	
VSRX 3/8	3/8	26	44.5	25.5	19	37	
VSRX 1/2	1/2	32	54	23	31	45	
VSRX 3/4	3/4	46	79	35	44	65	
VSRX 1	1	46	79	35	44	65	



## VU VALVULA ANTIRRETORNO



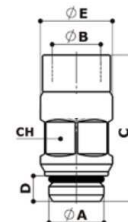
CODIGO	A	L	C	D	E	F	G	CH	CH1	Gr
VU M5	M5	25						8		
VU 1/8	1/8	35						14		
VU 1/4	1/4	40						17		
VU 3/8	3/8	45						22		
VU 1/2	1/2	50						25		
VU 3/4	3/4									
VU 1	1									



## VUMH VALVULA ANTIRRETORNO MACHO/HEMBRA



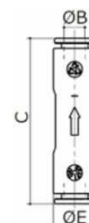
CODIGO	A	B	C	D	E	CH	Gr
VUMH M5	M5	M5	26	4	10	9	7
VUMH 1/8	1/8	1/8	31	5.5	13	12	15
VUMH 1/4	1/4	1/4	34.5	6	17	15	29
VUMH 3/8	3/8	3/8	41	8	20	18	51
VUMH 1/2	1/2	1/2	57	9	26	24	125



## VUTT VALVULA ANTIRRETORNO TUBO/TUBO



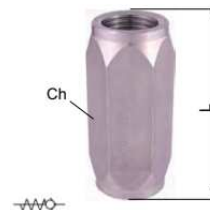
CODIGO	B	C	E	Gr
VUTT04	4	40.5	9	4
VUTT06	6	47.3	12.2	8
VUTT08	8	53.6	14	9
VUTT10	10	56.9	15.5	11
VUTT12	12	67	19	21



## VUX VALVULA ANTIRRETORNO HEMBRA/HEMBRA ACERO INOX.



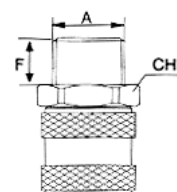
CODIGO	B	CH	L	Gr
VUX 1/8	1/8	14	42	
VUX 1/4	1/4	19	50	
VUX 3/8	3/8	24	60	
VUX 1/2	1/2	27	65	
VUX 3/4	3/4	34	75	
VUX 1	1	41	93	
VUX 1 1/4	1 1/4	50	110	
VUX 1 1/2	1 1/2	55	112	
VUX 2	2	75	120	



## VSC VALVULA DE ESCAPE DE CONDENSACIONES



CODIGO	A	F	C	D	E	G	CH	CH1	Gr
VSC 1/4	1/4	9					16		

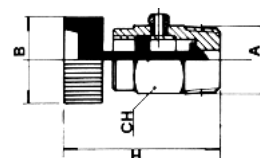


*Hasta fin de existencias*

## R GRIFO



CODIGO	A	B	H	D	E	F	G	CH	CH1	Gr
R 1/4	1/4	17	30					13		
R 3/8	3/8	17	30					13		

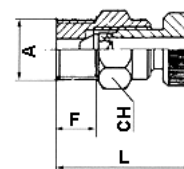


*Hasta fin de existencias*

## RSZ GRIFO DE PURGA CON POMO



CODIGO	A	F	L	D	E	G	CH	CH1	Gr
RSZ 1/8	1/8	6	16-18				12		
RSZ 1/2	1/2	9	26-29				22		



*Hasta fin de existencias*

## 025 GRIFO DE PURGA



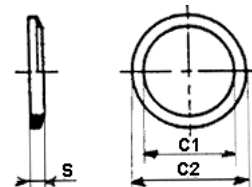
CODIGO	F	B	C	D	E	F	G	CH	CH1	Gr
025 1/8	1/8									
025 1/4	1/4									
025 3/8	3/8									
025 1/2	1/2									



## RA ARANDELA DE ALUMINIO

CODIGO	X	C1	C2	S	E	F	G	CH	CH1	Gr
RA M5	M5	5	9	1						
*RA M8	M8	8								
*RA M10	M10	10								
*RA M12	M12	12								
*RA M16	M16	16								
*RA M22	M22	22								
RA 1/8	1/8	10	14	1,5						
RA 1/4	1/4	13,3	19	1,5						
RA 3/8	3/8	16,7	22	1,5						
RA 1/2	1/2	21,5	27	1,5						
RA 3/4	3/4	27	33	1,5						
RA 1	1	33,6	41	1,5						
*RA 1 1/4	1 1/4	42,5	54	1,5						
*RA 1 1/2	1 1/2	48	60	1,5						
*RA 2	2"	60	71,8	1,5						

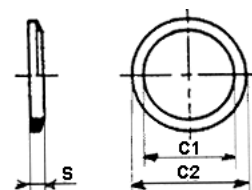
\* Hasta fin de existencias



## RR ARANDELA DE COBRE

CODIGO	X	C1	C2	S	E	F	G	CH	CH1	Gr
RR 1/8	1/8	10,1	14	1,5						
RR 1/4	1/4	13,3	19	1,5						
RR 3/8	3/8	16,7	22	1,5						
RR 3/4	3/4	26,7	32	1,5						
RR 1	1	33,6	41	1,5						
RR 1 1/4	1 1/4	42,5	54	1,5						
RR 1 1/2	1 1/2	48	60	1,5						
RR 2	2	60	71,8	1,5						

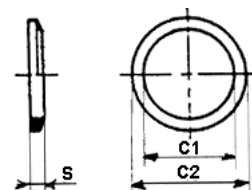
Hasta fin de existencias



## RN ARANDELA DE NYLON

CODIGO	X	C1	C2	S	E	F	G	CH	CH1	Gr
RN M5	M5	5,1	9	1,5						
RN 1/8	1/8	9,8	14	1,5						
RN 1/4	1/4	13,2	18	1,8						
RN 3/8	3/8	16,7	21	1,8						
RN 1/2	1/2	21,1	26	2,5						
RN 3/4	3/4	26,7	32	1,5						
RN 1	1	33,6	41	1,5						
*RN 1 1/4	1 1/4	42,5	54	1,5						
*RN 1 1/2	1 1/2	48	60	1,5						
*RN 2	2	60	71,8	1,5						

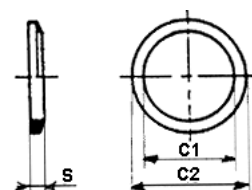
\* Hasta fin de existencias



## RF ARANDELA DE FIBRA

CODIGO	X	C1	C2	S	E	F	G	CH	CH1	Gr
RF M5	M5	8	8,5	1						
RF 1/4	1/4	13,3	19	1,5						
RF 1/2	1/2	21,3	27	1,5						
RF 3/4	3/4	26,7	32	1,5						
RF 1	1	33,6	41	1,5						

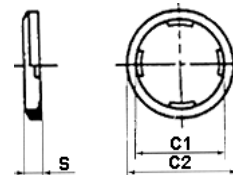
Hasta fin de existencias



## RND ARANDELA DE NYLON CON ENCLAVAMIENTO



CODIGO	X	C1	C2	S	E	F	G	CH	CH1	Gr
RND M5	M5	5,3	8,5	1,5						
RND M6	M6	-	-	-						
RND 1/8	1/8	10,3	14,3	2						
RND 1/4	1/4	13,6	18	2						
RND 3/8	3/8	17	22	2						
RND 1/2	1/2	21,8	26	2,5						
RND 3/4	3/4	27	33	2,5						
RND 1	1	33	41	2,5						



## BC DEPOSITO 2 SALIDAS



CODIGO	Litros	D.	L	Gr
BC 0,5	0,5	80	130	
BC 1	1	85	230	
BC 2,5	2,5	160	175	
BC 5	5	210	185	
BC 7	7	210	248	
BC 12	12	229	355	



## BCS DEPOSITO 4 SALIDAS



CODIGO	Litros	D.	L	Gr
BCS 1	1	85	230	
BCS 2,5	2,5	160	175	
BCS 5	5	210	185	
BCS 7	7	210	248	
BCS 10	10	170	520	
BCS 12	12	229	355	



## BCSX DEPOSITO 4 SALIDAS ACERO INOX.



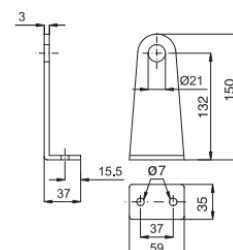
CODIGO	Litros	D.	L	Gr
BCSX 5	5	170	260	
BCSX 12	12	220	360	



## STAFFA ESCUADRA PARA DEPOSITO



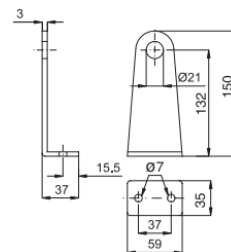
CODIGO	L	B	C	Ø	Ø1	F	G	CH	CH1	Gr
STAFFA										



## STAFFAX ESCUADRA PARA DEPOSITO ACERO INOX.



CODIGO	L	B	C	Ø	Ø1	F	G	CH	CH1	Gr
STAFFAX										



## FL-FF FILTRO EN LINEA HEMBRA/HEMBRA



CODIGO	R.	Gr
FL-FF 1/8	1/8	
FL-FF 1/4	1/4	
FL-FF 3/8	3/8	
FL-FF 1/2	1/2	

## FL-MF FILTRO EN LINEA MACHO/HEMBRA

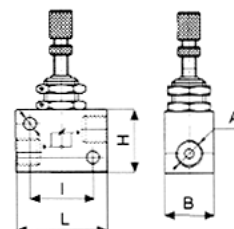


CODIGO	R.	Gr
FL-MF 1/8	1/8	
FL-MF 1/4	1/4	
FL-MF 3/8	3/8	
FL-MF 1/2	1/2	

## RFL-U REGULADOR DE FLUJO UNIDIRECCIONAL



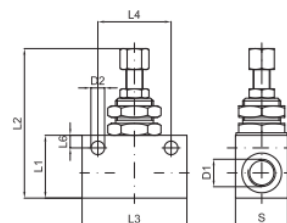
CODIGO	A	B	H	I	L	F	G	CH	CH1	Gr
RFL-U 1/8	1/8	17	22	22	32					
RFL-U 1/4	1/4	22	32	30	39					
RFL-U 3/8	3/8	-	-	-	-					
RFL-U 1/2	1/2	-	-	-	-					



## RFLUX REGULADOR DE FLUJO UNIDIRECCIONAL ACERO INOX.



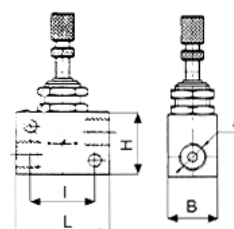
CODIGO	D1	D2	L1	L2min	L2max	L3	L4	S	Gr
RFLUX 1/8	1/8	5.4	30	49	54	40	30	20	
RFLUX 1/4	1/4	5.4	30	49	54	40	30	20	
RFLUX 3/8	3/8	5.4	35	57	65	49	36	25	
RFLUX 1/2	1/2	5.4	35	57	65	49	36	25	



## RFL-B REGULADOR DE FLUJO BIDIRECCIONAL



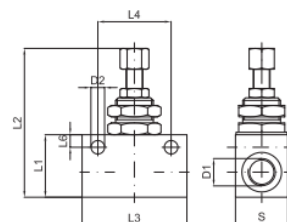
CODIGO	A	B	H	I	L	F	G	CH	CH1	Gr
RFL-B 1/8	1/8	17	22	22	32					
RFL-B 1/4	1/4	22	32	30	39					
RFL-B 3/8	3/8	-	-	-	-					
RFL-B 1/2	1/2	-	-	-	-					



## RFLBX REGULADOR DE FLUJO BIDIRECCIONAL ACERO INOX.



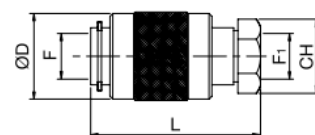
CODIGO	D1	D2	L1	L2min	L2max	L3	L4	S	Gr
RFLBX 1/8	1/8	5.4	30	49	54	40	30	20	
RFLBX 1/4	1/4	5.4	30	49	54	40	30	20	
RFLBX 3/8	3/8	5.4	35	57	65	49	36	25	
RFLBX 1/2	1/2	5.4	35	57	65	49	36	25	



## SV27 (SV26 3/4) VALVULA DE CORREDERA HEMBRA/HEMBRA



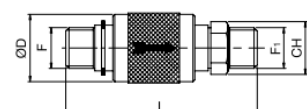
CODIGO	F	F1	D	L	CH	Gr
SV270018	1/8	1/8	22	43	14	
SV270014	1/4	1/4	26	50	19	
SV270038	3/8	3/8	32	60	22	
SV270012	1/2	1/2	36	65.5	27	
SV260034	3/4	3/4	48	80	36	



## SVMM27 VALVULA DE CORREDERA MACHO/MACHO



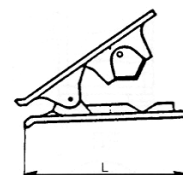
CODIGO	F	F1	D	L	CH	Gr
SVMM270014	1/4	1/4	22	43	14	



## PT PINZA CORTATUBO



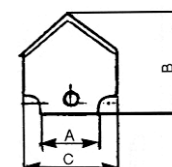
CODIGO	L	B	C	D	E	F	G	CH	CH1	Gr
PT	81									



## L HOJA DE RECAMBIO

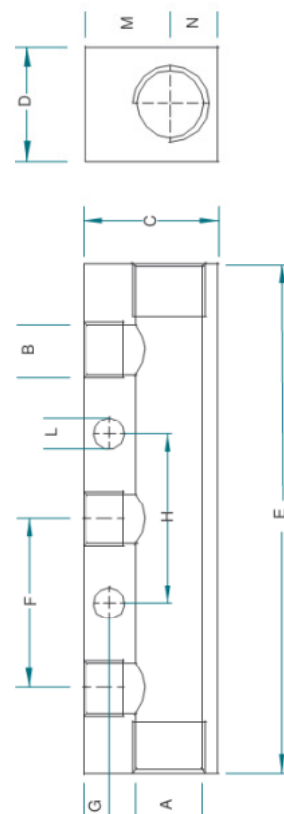


CODIGO	A	B	C	D	E	F	G	CH	CH1	Gr
L	11,2	17,6	19,3							



## C COLECTORES MULTIPLES SALIDA SIMPLE

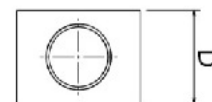
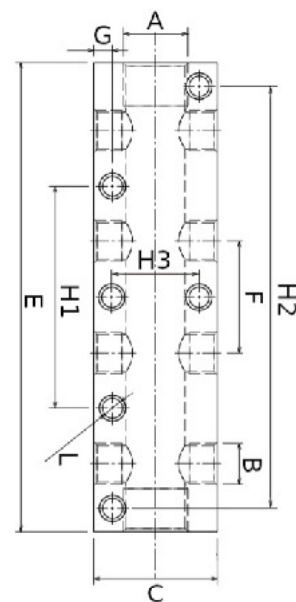
CODIGO	A	B	C	D	E	F	G	H	L	M	N
C.2 18 14	1/4	1/8	30	20	60	30	4,5	21	5,5	15	15
C.2 18 38	3/8	1/8	40	20	66	30	4,5	31	5,5	20	20
C.2 14 38	3/8	1/4	40	20	72	36	6	28	6,5	20	20
C.2 14 12	1/2	1/4	40	30	80	36	6	28	6,5	20	20
C.2 38 12	1/2	3/8	40	30	90	40	6	28	6,5	20	20
C.2 12 12	1/2	1/2	50	30	102	34	6,5	83	5,5	25	25
C.3 18 14	1/4	1/8	30	20	90	30	4,5	30	5,5	15	15
C.3 18 38	3/8	1/8	30	25	96	30	4,5	30	5,5	18	12
C.3 14 38	3/8	1/4	30	25	108	36	6	36	6,5	18	12
C.3 14 12	1/2	1/4	40	30	116	36	6	36	6,5	21	19
C.3 38 12	1/2	3/8	40	30	130	40	6	40	6,5	21	19
C.3 12 12	1/2	1/2	50	30	136	34	6,5	117	5,5	25	25
C.4 18 14	1/4	1/8	30	20	120	30	4,5	60	5,5	15	15
C.4 18 38	3/8	1/8	30	25	126	30	4,5	60	5,5	18	12
C.4 14 38	3/8	1/4	30	25	144	36	6	72	6,5	18	12
C.4 14 12	1/2	1/4	40	30	152	36	6	72	6,5	21	19
C.4 38 12	1/2	3/8	40	30	170	40	6	80	6,5	21	19
C.4 12 12	1/2	1/2	50	30	170	34	6,5	151	5,5	25	25
C.5 18 14	1/4	1/8	30	20	150	30	4,5	90	5,5	15	15
C.5 18 38	3/8	1/8	30	25	156	30	4,5	90	5,5	18	12
C.5 14 38	3/8	1/4	30	25	180	36	6	108	6,5	18	12
C.5 14 12	1/2	1/4	40	30	188	36	6	108	6,5	21	19
C.5 38 12	1/2	3/8	40	30	210	40	6	120	6,5	21	19
C.5 12 12	1/2	1/2	50	30	204	34	6,5	185	5,5	25	25
C.6 18 14	1/4	1/8	30	20	180	30	4,5	120	5,5	15	15
C.6 18 38	3/8	1/8	30	25	186	30	4,5	120	5,5	18	12
C.6 14 38	3/8	1/4	30	25	216	36	6	144	6,5	18	12
C.6 14 12	1/2	1/4	40	30	224	36	6	144	6,5	21	19
C.6 38 12	1/2	3/8	40	30	250	40	6	160	6,5	21	19
C.6 12 12	1/2	1/2	50	30	238	34	6,5	219	5,5	25	25





## C COLECTORES MULTIPLES SALIDA DOBLE

CODIGO	A	B	C	D	E	F	G	H1	H2	H3	L
C.2 18 18 14	1/4	1/8	30	20	60	30	4,5			21	5,5
C.2 18 18 38	3/8	1/8	40	20	66	30	6			28	5,5
C.2 14 14 38	3/8	1/4	40	20	72	36	6			28	6,5
C.2 14 14 12	1/2	1/4	40	30	80	36	6			28	6,5
C.2 38 38 12	1/2	3/8	50	30	78	26	6,5		59		5,5
C.2 12 12 12	1/2	1/2	50	30	102	34	6,5		83		5,5
C.3 18 18 14	1/4	1/8	30	20	90	30	4,5	30			5,5
C.3 18 18 38	3/8	1/8	40	25	96	30	4,5	30			5,5
C.3 14 14 38	3/8	1/4	40	25	108	36	6	36			6,5
C.3 14 14 12	1/2	1/4	40	30	116	36	6	36			6,5
C.3 38 38 12	1/2	3/8	50	30	104	26	6,5		85		5,5
C.3 12 12 12	1/2	1/2	50	30	136	34	6,5		117		5,5
C.4 18 18 14	1/4	1/8	30	20	120	30	4,5	60			5,5
C.4 18 18 38	3/8	1/8	40	25	126	30	4,5	60			5,5
C.4 14 14 38	3/8	1/4	40	25	144	36	6	72			6,5
C.4 14 14 12	1/2	1/4	40	30	152	36	6	72			6,5
C.4 38 38 12	1/2	3/8	50	30	130	26	6,5		111		5,5
C.4 12 12 12	1/2	1/2	50	30	170	34	6,5		151		5,5
C.5 18 18 14	1/4	1/8	30	20	150	30	4,5	90			5,5
C.5 18 18 38	3/8	1/8	40	25	156	30	4,5	90			5,5
C.5 14 14 38	3/8	1/4	40	25	180	36	6	108			6,5
C.5 14 14 12	1/2	1/4	40	30	188	36	6	108			6,5
C.5 38 38 12	1/2	3/8	50	30	156	26	6,5		137		5,5
C.5 12 12 12	1/2	1/2	50	30	204	34	6,5		185		5,5
C.6 18 18 14	1/4	1/8	30	20	126	18	4,5		117		4,5
C.6 14 14 38	3/8	1/4	40	25	164	24	6		147		5,5
C.6 38 38 12	1/2	3/8	50	30	182	26	6,5		163		5,5
C.6 12 12 12	1/2	1/2	50	30	238	34	6,5		219		5,5



## CINTA TEFLON



CODIGO	mts	B	C	D	E	F	G	CH	Gr
CINTA TEFLON	12								

## 029 PISTOLA DE SOPLADO



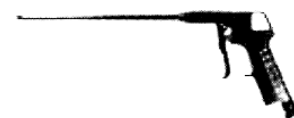
CODIGO	A	B	C	D	E	F	G	CH	CH1	Gr
029										



## 030 PISTOLA DE SOPLADO CON PROLONGADOR



CODIGO	A	B	C	D	E	F	G	CH	CH1	Gr
030										



## 031 PROLONGADOR PARA PISTOLA DE SOPLADO



CODIGO	A	B	C	D	E	F	G	CH	CH1	Gr
031										





## VALVULAS DE SEGURIDAD

### VALVULA DE SEGURIDAD CON TARADO LIBRE



CODIGO	CARACTERISTICAS	
	ACOPLAMIENTO	BAR
NVSFREE18T...	1/8"	0-16
NVSFREE14T...	1/4"	0-16
NVSFREE38T...	3/8"	0-18
NVSFREE12T...	1/2"	0-18
NVSFREE34T...	3/4"	0-18
NVSFREE1T...	1"	0-18

campo de pretarado  
0 - 5 bar  
6 - 12 bar  
13 - 18 bar

Ej.: NVSFREE18T612B Válvula 1/8" Gas regulable de 6 a 12 bars

### VALVULA DE SEGURIDAD TARADA FIJA EXENTA



CODIGO	CARACTERISTICAS	
	ACOPLAMIENTO	BAR
NVS30018...	1/8"	0-16
NVS30014...	1/4"	0-16
NVS30038...	3/8"	0-18
NVS30012...	1/2"	0-18
NVS30034...	3/4"	0-18
NVS3001...	1"	0-18

"EXENTA"  
sin certificado PED

Ej.: NVS30019B Válvula 1" Gas regulada a 9 bars

### VALVULA DE SEGURIDAD TARADA FIJA C/ ANILLA EXENTA



CODIGO	CARACTERISTICAS	
	ACOPLAMIENTO	BAR
NVS40018...A	1/8"	0-16
NVS40014...A	1/4"	0-16
NVS40038...A	3/8"	0-18
NVS40012...A	1/2"	0-18
NVS40034...A	3/4"	0-18
NVS4001...A	1"	0-18

"EXENTA"  
sin certificado PED

sustituir los puntos(...)  
por el tarado de la  
válvula (ej: 8 bar = 8B)

Ej.: NVS400345BA Válvula 3/4" Gas regulada a 5 bars con anilla

### VALVULA DE SEGURIDAD TARADA FIJA CATEGORIA IV



CODIGO	CARACTERISTICAS	
	ACOPLAMIENTO	BAR
NVS30018...C4	1/8"	0-16
NVS30014...C4	1/4"	0-16
NVS30038...C4	3/8"	0-18
NVS30012...C4	1/2"	0-18

"CATEGORIA IV"  
con certificado PED

Ej.: NVS300143BC4 Válvula 1/4" Gas regulada a 3 bars

### VALVULA DE SEGURIDAD TARADA FIJA CATEGORIA IV C/ ANILLA



CODIGO	CARACTERISTICAS	
	ACOPLAMIENTO	BAR
NVS40018...AC4	1/8"	0-16
NVS40014...AC4	1/4"	0-16
NVS40038...AC4	3/8"	0-18
NVS40012...AC4	1/2"	0-18
NVS40034...AC4	3/4"	0-18
NVS4001...AC4	1"	0-18

"CATEGORIA IV"  
con certificado PED

Ej.: NVS400384BAC4 Válvula 3/8" Gas regulada a 4 bars con anilla

Todas las válvulas de "CATEGORIA IV" vienen acompañadas de su correspondiente certificado PED