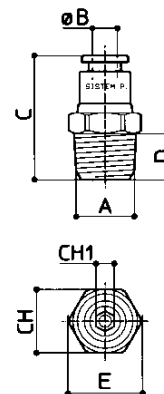


SR 11 RECTO CONICO MACHO



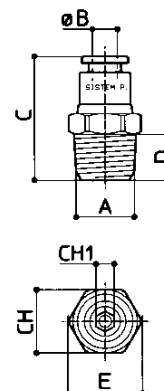
CODIGO	A	B	C	D	E	F	G	CH	CH1	Gr
SR110418	1/8	4	22	8	11,2			10	3	8
SR110414	1/4	4	25	10	15,5			14	3	17
SR110518	1/8	5	22	8	11,2			10	4	8
SR110514	1/4	5	25	10	15,5			14	4	17
SR110618	1/8	6	22	8	13,4			12	4	12
SR110614	1/4	6	27	10	15,5			14	4	19
SR110818	1/8	8	29	8	15,5			14	6	16
SR110814	1/4	8	28	10	15,5			14	6	18
SR110838	3/8	8	30	11	19			17	6	29
SR111014	1/4	10	34	10	19			17	8	29
SR111038	3/8	10	33	11	19			17	8	32
SR111012	1/2	10	36	14	24,5			22	8	58
SR111214	1/4	12	37	10	23,5			21	8	44
SR111238	3/8	12	36	11	23,5			21	10	43
SR111212	1/2	12	36	14	24,5			22	10	55
SR111438	3/8	14	41	11	28			25	10	73
SR111412	1/2	14	41	14	28			25	12	76



SR 11NPT RECTO CONICO MACHO NPT



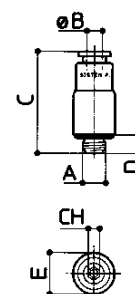
CODIGO	A	B	C	D	E	F	G	CH	CH1	Gr
SR11NPT0418	1/8	4	22	8	11,2			10	3	8
SR11NPT0414	1/4	4	25	10	15,5			14	3	17
SR11NPT0618	1/8	6	22	8	13,4			12	4	12
SR11NPT0614	1/4	6	27	10	15,5			14	4	19
SR11NPT0818	1/8	8	29	8	15,5			14	6	16
SR11NPT0814	1/4	8	28	10	15,5			14	6	18
SR11NPT1014	1/4	10	34	10	19			17	8	29
SR11NPT1038	3/8	10	33	11	19			17	8	32
SR11NPT1214	1/4	12	37	10	23,5			21	8	44
SR11NPT1238	3/8	12	36	11	23,5			21	10	43
SR11NPT1212	1/2	12	36	14	24,5			22	10	55



SR 12B RECTO CILINDRICO MACHO ESPECIAL

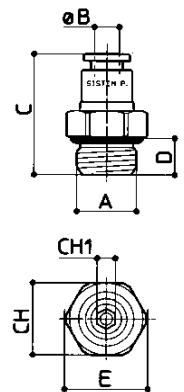


CODIGO	A	B	C	D	E	F	G	CH	CH1	Gr
SR12B04M5	M5	4	22	4	9			2,5		6
SR12B04M6x075	M6x075	4	23	5	9			2,5		6
SR12B04M6x100	M6x100	4	23	5	9			2,5		6



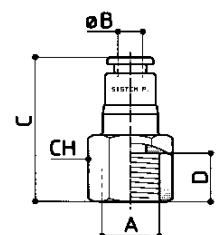
SR 12 RECTO CILINDRICO MACHO

CODIGO	A	B	C	D	E	F	G	CH	CH1	Gr
SR1204M5	M5	4	22	4	10			9	2,5	6
SR1204M6x075	M6x075	4	23	5	10			9	2,5	6
SR12A04M8x100	M8x100	4	22	6	10,4			9	-	6
SR120418	1/8	4	20	6	14,3			13	3	9
SR120414	1/4	4	23	8	17,5			16	3	17
SR1205M5	M5	5	22	4	11,2			10	-	7
SR120518	1/8	5	22,5	6	14,3			13	4	11
SR120514	1/4	5	23,5	8	17,5			16	4	17
SR1206M5	M5	6	26	4	13			12	-	12
SR1206M6x100	M6x100	6	26	5	13			12	2,5	11
SR1206M8x125	M8x125	6	27,5	6	13			12	4	12
SR1206M10x100	M10x100	6	24,5	6	14,3			13	4	14
SR1206M12x100	M12x100	6	26	8	17,5			16	4	19
SR1206M12x125	M12x125	6	26	8	17,5			16	4	18
SR1206M12x150	M12x150	6	26	8	17,5			16	4	18
SR120618	1/8	6	24,5	6	14,3			13	4	12
SR120614	1/4	6	26	8	17,5			16	4	19
SR1208M8x125	M8x125	8	29,5	6	15,5			14	-	17
SR1208M10x100	M10x100	8	29,5	6	15,5			14	5	18
SR1208M12x100	M12x100	8	29	8	17,5			16	6	19
SR1208M12x125	M12x125	8	29	8	17,5			16	6	19
SR1208M12x150	M12x150	8	29	8	17,5			16	6	19
SR120818	1/8	8	29,5	6	15,5			14	5	18
SR120814	1/4	8	29	8	17,5			16	6	21
SR120838	3/8	8	32	10	22			20	6	38
SR121014	1/4	10	34	8	19			17	8	28
SR121038	3/8	10	32	10	22			20	8	35
SR121012	1/2	10	36	12	26,8			24	8	63
SR121214	1/4	12	36	8	23,5			21	8	44
SR121238	3/8	12	37	10	23,5			21	10	46
SR121212	1/2	12	37	12	26,8			24	10	62
SR121438	3/8	14	42	10	28			25	10	76
SR121412	1/2	14	44	12	28			25	12	84



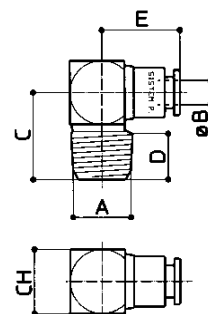
SR 13 RECTO CILINDRICO HEMBRA

CODIGO	A	B	C	D	E	F	G	CH	CH1	Gr
SR1304M5	M5	4	24	6				9		9
SR130418	1/8	4	27	8				12		12
SR130414	1/4	4	30	10				16		20
SR130518	1/8	5	27	8				12		12
SR130618	1/8	6	31	8				13		19
SR130614	1/4	6	32	10				16		24
SR130818	1/8	8	33	8				15		26
SR130814	1/4	8	34	10				16		26
SR131014	1/4	10	36	10				17		34
SR131038	3/8	10	36	11				20		40
SR131214	1/4	12	39	10				21		55
SR131238	3/8	12	39	11				21		52



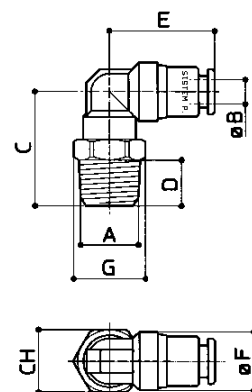
SR 14 CODO CONICO FIJO MACHO

CODIGO	A	B	C	D	E	F	G	CH	CH1	Gr
SR1404M5	M5	4	11,5	5	12,5			9		8
SR1404M6x075	M6x075	4	9,5	5	12,5			9		7
SR1404M6x100	M6x100	4	9,5	5	12,5			9		7
SR140418	1/8	4	15	8	13			10		
SR140414	1/4	4	17	10	15			14		11
SR140518	1/8	5	15	8	13			10		23
SR140514	1/4	5	18,5	10	15			14		11
SR140618	1/8	6	19,5	8	16,5			12		22
SR140614	1/4	6	19	10	17			14		20
SR140818	1/8	8	19	8	19			14		26
SR140814	1/4	8	20	10	18,5			14		27
SR141014	1/4	10	21,5	10	20,5			17		30
SR141038	3/8	10	23	11	20,5			17		44
SR141238	3/8	12	30,5	11	38,5			22		51
SR141212	1/2	12	30,5	14	38,5			22		122
SR141438	3/8	14	30,5	11	42,5			22		128
SR141412	1/2	14	30,5	14	42,5			22		153



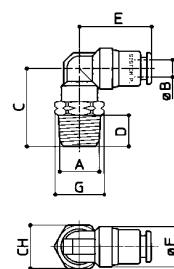
SR 15 CODO CONICO GIRATORIO MACHO

CODIGO	A	B	C	D	E	F	G	CH	CH1	Gr
SR150418	1/8	4	21,5	8	20	10	12,2	11		15
SR150414	1/4	4	23	10	20	10	15,5	14		22
SR150518	1/8	5	22	8	20,5	11	12,2	11		16
SR150514	1/4	5	24	10	20,5	11	15,5	14		24
SR150618	1/8	6	23	8	23	13	13,4	12		21
SR150614	1/4	6	25	10	23	13	15,5	14		28
SR150818	1/8	8	24	8	25	15	15,5	14		28
SR150814	1/4	8	26	10	25	15	15,5	14		32
SR150838	3/8	8	26	11	25	15	19	17		45
SR151014	1/4	10	30	10	28,5	17,5	21,2	19		50
SR151038	3/8	10	31	11	28,5	17,5	21,2	19		59
SR151012	1/2	10	34	14	28,5	17,5	24,5	22		79
SR151214	1/4	12	30	10	32	21,5	24,5	22		72
SR151238	3/8	12	33	11	32	21,5	24,5	22		78
SR151212	1/2	12	35	14	32	21,5	24,5	22		94
SR151438	3/8	14	35	11	36,5	25,5	29	26		120
SR151412	1/2	14	38	14	36,5	25,5	29	26		135



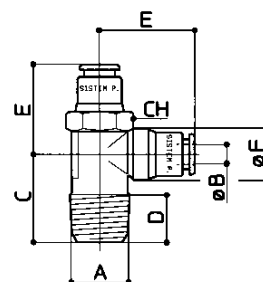
SR15NPT CODO GIRATORIO CONICO MACHO NPT

CODIGO	A	B	C	D	E	F	G	CH	CH1	Gr
SR15NPT0418	1/8	4	21,5	8	20	10	12,2	11		15
SR15NPT0414	1/4	4	23	10	20	10	15,5	14		22
SR15NPT0618	1/8	6	23	8	23	13	13,4	12		21
SR15NPT0614	1/4	6	25	10	23	13	15,5	14		28
SR15NPT0818	1/8	8	24	8	25	15	15,5	14		28
SR15NPT0814	1/4	8	26	10	25	15	15,5	14		32
SR15NPT1038	3/8	10	31	11	28,5	17,5	21,2	19		59
SR15NPT1238	3/8	12	33	11	32	21,5	24,5	22		78
SR15NPT1212	1/2	12	35	14	32	21,5	24,5	22		94



SR16 T LATERAL CONICA FIJA MACHO

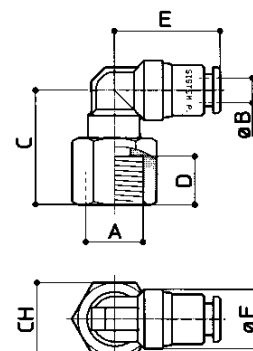
CODIGO	A	B	C	D	E	F	G	CH	CH1	Gr
SR160418	1/8	4	15	8	20	10		10		14
SR160618	1/8	6	20	8	23	13		13		28
SR161238	3/8	12	34	11	32	21,5		22		101
SR161212	1/2	12	37	14	32	21,5		22		116
SR161438	3/8	14	37	11	36	25,5		26		160
SR161412	1/2	14	40	14	36	25,5		26		173



SR 17 CODO CILINDRICO GIRATORIO HEMBRA



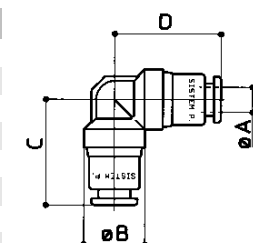
CODIGO	A	B	C	D	E	F	G	CH	CH1	Gr
SR170418	1/8	4	22	8	20	10		12		15
SR170518	1/8	5	22	8	20,5	11		12		17
SR170618	1/8	6	23	8	23	13		12		22
SR170614	1/4	6	25	10	23	13		16		29
SR170818	1/8	8	25	8	25	15		14		32
SR170814	1/4	8	26	10	25	15		16		35
SR171014	1/4	10	31	10	28,5	17,5		19		59
SR171038	3/8	10	33	10	28,5	17,5		20		58
SR171214	1/4	12	33	11	32	21,5		22		71
SR171238	3/8	12	33	11	32	21,5		22		78



SR 18 CODO INTERMEDIO



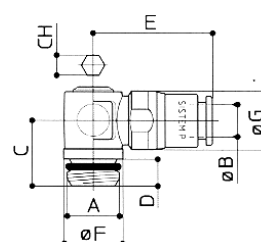
CODIGO	A	B	C	D	E	F	G	CH	CH1	Gr
SR180004	4	10	19	19						9
SR180005	5	11	20	20						12
SR180006	6	13	23	23						20
SR180008	8	15	25	25						27
SR180010	10	17,5	28,5	28,5						39
SR180012	12	21,5	31,5	29,5						61
SR180014	14	25,5	36,5	33,5						108



SR 19 CODO CON LLAVE ALLEN



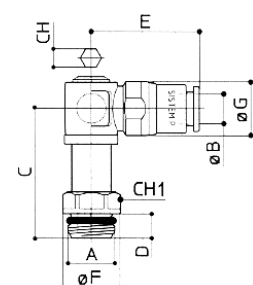
CODIGO	A	B	C	D	E	F	G	CH	CH1	Gr
SR190418	1/8	4	13,5	5	22,5	11	11,5	4		18
SR190414	1/4	4	15	6	22,5	14,3	11,5	4		21
SR190618	1/8	6	13,5	5	22,5	11	13,8	4		22
SR190614	1/4	6	15	6	22,5	14,3	13,8	4		25
SR190818	1/8	8	13,5	5	27	11	14,5	4		23
SR190814	1/4	8	15	6	27	14,3	14,5	4		26



SR 20 CODO CON LLAVE ALLEN LARGO



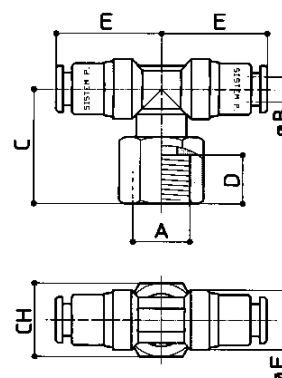
CODIGO	A	B	C	D	E	F	G	CH	CH1	Gr
SR200418	1/8	4	30,5	5	22,5	11	11,5	4	10	26
SR200414	1/4	4	32	6	22,5	14,3	11,5	4	10	28
SR200618	1/8	6	30,5	5	22,5	11	13,8	4	10	29
SR200614	1/4	6	32	6	22,5	14,3	13,8	4	10	32
SR200818	1/8	8	30,5	5	27	11	14,5	4	10	31
SR200814	1/4	8	32	6	27	14,3	14,5	4	10	33



SR 21 T CENTRAL CILINDRICA GIRATORIA HEMBRA



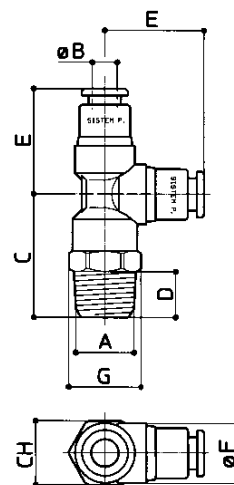
CODIGO	A	B	C	D	E	F	G	CH	CH1	Gr
SR210418	1/8	4	22	8	20	10		12		19
SR210518	1/8	5	22	8	20,5	11		12		23
SR210618	1/8	6	23	8	23	13		12		30
SR210614	1/4	6	25	10	23	13		16		38
SR210818	1/8	8	24	8	25,5	15		14		43
SR210814	1/4	8	26	10	25	15		16		45
SR211014	1/4	10	28	10	28,5	17,5		19		72
SR211038	3/8	10	30	11	29	17,5		20		69
SR211214	1/4	12	33	10	32	21,5		22		81
SR211238	3/8	12	33	11	32	21,5		22		91



SR 22 T LATERAL CONICA GIRATORIA MACHO



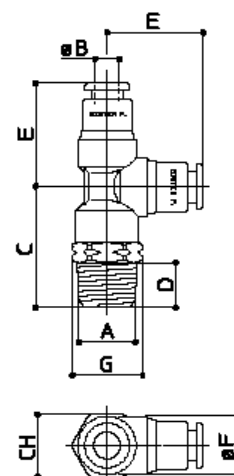
CODIGO	A	B	C	D	E	F	G	CH	CH1	Gr
SR220418	1/8	4	20	8	20	10	12,2	11		19
SR220414	1/4	4	20	10	20	10	15,5	14		26
SR220518	1/8	5	22,5	8	20,5	11	12,2	11		21
SR220514	1/4	5	24,5	10	20,5	11	15,5	14		29
SR220618	1/8	6	25	8	23	13	13,4	12		34
SR220614	1/4	6	27	10	23	13	15,5	14		39
SR220818	1/8	8	26	8	25,5	15	17,9	16		45
SR220814	1/4	8	28	10	25,5	15	17,9	16		46
SR221014	1/4	10	30	10	29	17,5	21,2	19		65
SR221038	3/8	10	31	11	29	17,5	21,2	19		71
SR221012	1/2	10	34	14	29	17,5	24,5	22		91
SR221214	1/4	12	33	10	32	21,5	24,5	22		95
SR221238	3/8	12	34	11	32	21,5	24,5	22		100
SR221212	1/2	12	37	14	32	21,5	24,5	22		116
SR221438	3/8	14	37	11	36	25,5	29	26		160
SR221412	1/2	14	40	14	36	25,5	29	26		173



SR22NPT T LATERAL CONICA GIRATORIA MACHO NPT



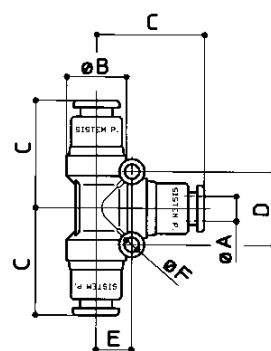
CODIGO	A	B	C	D	E	F	G	CH	CH1	Gr
SR22NPT0418	1/8	4	23	8	20	10	12,2	11		19
SR22NPT0414	1/4	4	25	10	20	10	15,5	14		26
SR22NPT0618	1/8	6	25	8	23	13	13,4	12		34
SR22NPT0614	1/4	6	27	10	23	13	15,5	14		39
SR22NPT0818	1/8	8	26	8	25,5	15	17,9	16		45
SR22NPT0814	1/4	8	28	10	25,5	15	17,9	16		46
SR22NPT1038	3/8	10	31	11	29	17,5	21,2	19		71
SR22NPT1238	3/8	12	34	11	32	21,5	24,5	22		100
SR22NPT1212	1/2	12	37	14	32	21,5	24,5	22		116



SR23 T INTERMEDIA



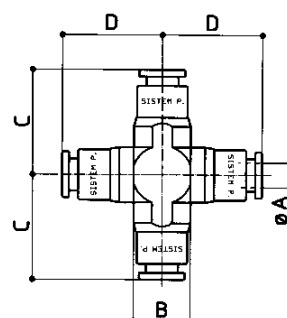
CODIGO	A	B	C	D	E	F	G	CH	CH1	Gr
SR230004	4	10	19,5	12	6	2,7				15
SR230005	5	11	20,5	-	-	-				20
SR230006	6	13	23,5	16	8	3,2				31
SR230008	8	15	26	18	9	3,2				41
SR230010	10	17,5	29	22	11	4,2				63
SR230012	12	21,5	31	-	-	-				85
SR230014	14	25,5	35	-	-	-				149



SR24 CRUZ INTERMEDIA



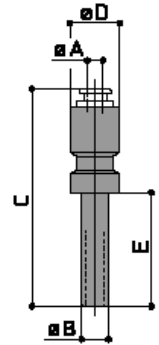
CODIGO	A	B	C	D	E	F	G	CH	CH1	Gr
SR240004	4	10	20	19,5						20
SR240005	5	10	20,5	20,5						24
SR240006	6	12	24	26						47
SR240008	8	14	26	29						78
SR240010	10	17	31	33						102
SR240012	12	21	34	36						138



SR25 REDUCCION FIJA (RESINA ACETÁLICA)



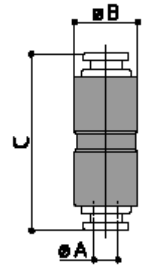
CODIGO	A	B	C	D	E	F	G	CH	CH1	Gr
SR250406	4	6	45,5	11	22					5
SR250408	4	8	48,5	14	25					6
SR250410	4	10	47,5	15,5	28					5
SR250412	4	12	49	16	30					18
SR250608	6	8	51	14	25					10
SR250610	6	10	50,5	15,5	28					9
SR250612	6	12	53,5	16	30					9
SR250614	6	14	56,5	16	33					9
SR250810	8	10	52	15,5	28					11
SR250812	8	12	54	16	30					11
SR250814	8	14	57	16	33					12
SR251012	10	12	56	18,5	30					15
SR251014	10	14	59	18,5	33					16
SR251214	12	14	60	22	33					20



SR26 PROLONGADOR



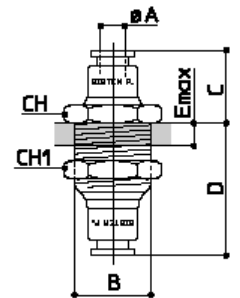
CODIGO	A	B	C	D	E	F	G	CH	CH1	Gr
SR260004	4	11	34							6
SR260005	5	11	34							13
SR260006	6	14	40							13
SR260008	8	16	43							18
SR260010	10	19	50							27
SR260012	12	22	51,5							36
SR260014	14	26	57							69



SR27 PROLONGADOR PASATABIQUES



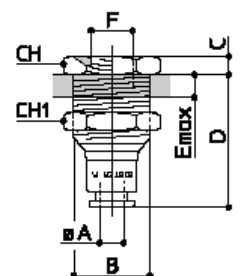
CODIGO	A	B	C	D	E	F	G	CH	CH1	Gr
SR270404	4	M1x1	14	24,5	10			13	14	19
SR270505	5	M12x100	15	25	10			13	14	19
SR270606	6	M15x100	16,5	28,5	11			18	18	36
SR270808	8	M17x100	18,5	32	13			20	20	45
SR271010	10	M20x150	19	32,5	13			22	22	59
SR271212	12	M22x150	20	34	13			25	25	79
SR271414	14	M27x150	22	34	13			30	30	132



SR28 PROLONGADOR PASATABIQUES HEMBRA



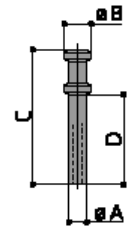
CODIGO	A	B	C	D	E	F	G	CH	CH1	Gr
SR280418	4	M12x100	12	24,5	10	1/8		14	14	26
SR280618	6	M15x100	4	28,5	11	1/8		18	18	30
SR280814	8	M17x100	4,5	32	13	1/4		20	20	36
SR281014	10	M20x150	4,5	32,5	13	1/4		22	22	50
SR281238	12	M22x150	4,5	34	13	3/8		25	25	61



SR29 TAPON (RESINA ACETALICA)



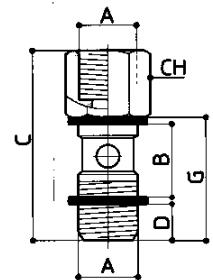
CODIGO	A	B	C	D	E	F	G	CH	CH1	Gr
SR290004	4	6	30							1
SR290005	5	7	30							1
SR290006	6	8	32							1
SR290008	8	10	35							1
SR290010	10	12	39							2
SR290012	12	14	43							3
SR290014	14	17	48							4



SR30 TORNILLO SIMPLE HEMBRA/MACHO



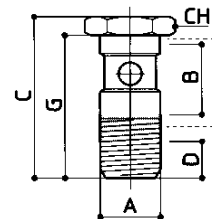
CODIGO	A	B	C	D	E	F	G	CH	CH1	Gr
SR301818	1/8	14	35	6			23	14		19
SR301414	1/4	16	40	6,5			25,5	17		33



SR31 TORNILLO SIMPLE



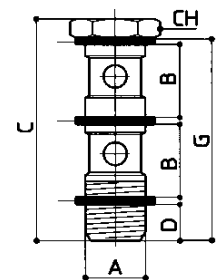
CODIGO	A	B	C	D	E	F	G	CH	CH1	Gr
SR3100M5	M5									
SR310018	1/8	14	31	6,5			27	14		15
SR310014	1/4	16	33,5	6,5			29	17		27



SR32 TORNILLO DOBLE



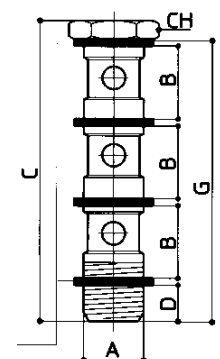
CODIGO	A	B	C	D	E	F	G	CH	CH1	Gr
SR3200M5	M5	9	28,5	4			25	8		4
SR320018	1/8	14	43	6,5			39	14		19
SR320014	1/4	16	46	5,5			42	17		34



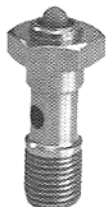
SR33 TORNILLO TRIPLE



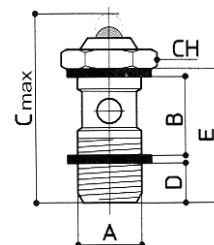
CODIGO	A	B	C	D	E	F	G	CH	CH1	Gr
SR330018	1/8	14	58,5	6,5			54,5	14		25
SR330014	1/4	16	64	6			60	17		43



SR34 TORNILLO SIMPLE CON INDICADOR DE PRESION



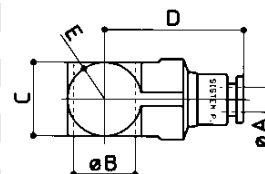
CODIGO	A	B	C	D	E	F	G	CH	CH1	Gr
SR3400M5	M5	9	25	4	15			8	3	
SR340018	1/8	14	32	6	23			14	12	
SR340014	1/4	16	34	6,5	25,5			17	22	



SR35 ORIENTABLE SIMPLE



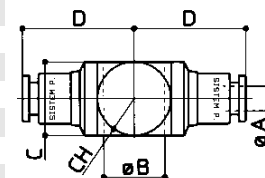
CODIGO	A	B	C	D	E	F	G	CH	CH1	Gr
SR3504M5	4	5,2 M5	9	19	9					9
SR350418	4	10,3 1/8	14	25	15					20
SR3505M5	5	5,2 M5	10	20	10					12
SR350518	5	10,3 1/8	14	23	14					21
SR350618	6	10,31/8	14	27,5	15					22
SR350614	6	13,3 1/4	16	26,5	17,5					31
SR350818	8	10,3 1/8	14	28,5	15					22
SR350814	8	13,3 1/4	16	31,5	17,5					31
SR351014	10	13,3 1/4	16	32	17,5					32



SR36 ORIENTABLE DOBLE



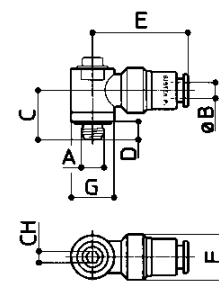
CODIGO	A	B	C	D	E	F	G	CH	CH1	Gr
SR3604M5	4	5,1 M5	9	19	9					12
SR360418	4	10,2 1/8	14	23,5	15					29
SR360618	6	10,2 1/8	14	24	15					32
SR360614	6	13,2 1/4	16	26,5	17,5					40
SR360818	8	10,2 1/8	14	25,5	15					33
SR360814	8	13,2 1/4	16	29	17,5					44
SR361014	10	13,2 1/4	16	29	17,5					54



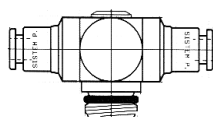
SR37 MINI CODO CILINDRICO GIRATORIO MACHO



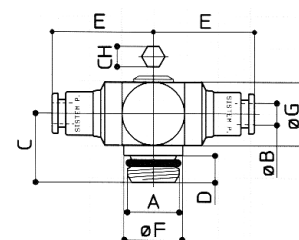
CODIGO	A	B	C	D	E	F	G	CH	CH1	Gr
SR3704M5	M5	4	11,5	4	21	9,8	9	2,5		9
SR3704M6x075	M6 x075	4	12,5	5	21	9,8	9	2,5		9
SR3704M6x100	M6x100	4	12,5	5	21	9,8	9	2,5		9
SR3704M8x100	M8x100	4	13	6	21	9,8	12	2,5		11
SR3705M5	M5	5	11,5	4	21	9,8	9	2,5		10
SR3705M6x075	M6x075	5	12,5	5	21	9,8	9	2,5		10
SR3705M6x100	M6x100	5	12,5	5	21	9,8	9	2,5		10
SR3705M8x100	M8x100	5	13	6	21	9,8	12	2,5		12
SR3706M5	M5	6	12,5	4	24	13	11	4		18
SR3706M6x100	M6x100	6	13,5	5	24	13	11	4		19



SR38 T CENTRAL GIRATORIA LLAVE ALLEN



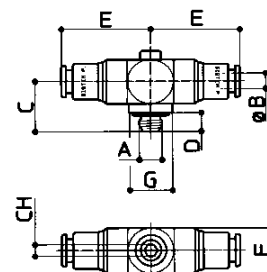
CODIGO	A	B	C	D	E	F	G	CH	CH1	Gr
SR380418	1/8	4	13,5	5	23,5	11	14	4		36
SR380414	1/4	4	15	6	23,5	14,3	14	4		38
SR380618	1/8	6	13,5	5	24	11	14	4		39
SR380614	1/4	6	15	6	24	14,3	14	4		41
SR380818	1/8	8	13,5	5	25,5	11	14	4		40
SR380814	1/4	8	15	6	25,5	14,3	14	4		42



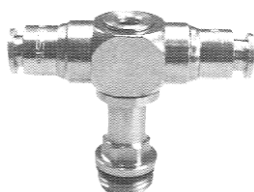
SR39 MINI T CENTRAL CILINDRICA GIRATORIA MACHO



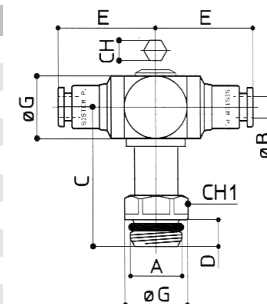
CODIGO	A	B	C	D	E	F	G	CH	CH1	Gr
SR3904M5	M5	4	11	4	19,5	10	9	2,5		14
SR3904M6x075	M6 x075	4	12	5	19,5	10	9	2,5		14
SR3904M6x100	M6x100	4	12	5	19,5	10	9	2,5		14
SR3904M8x100	M8x100	4	13	6	21	10	12	2,5		16



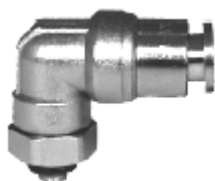
SR40 T CENTRAL GIRATORIA LLAVE ALLEN LARGA



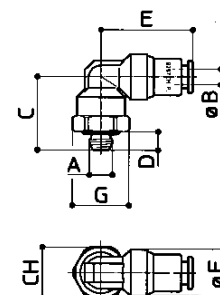
CODIGO	A	B	C	D	E	F	G	CH	CH1	Gr
SR400418	1/8	4	30,5	5	23,5	11	14	4		43
SR400414	1/4	4	32	6	23,5	14,3	14	4		46
SR400618	1/8	6	30,5	5	24	11	14	4		46
SR400614	1/4	6	32	6	24	14,3	14	4		49
SR400818	1/8	8	30,5	5	25,5	11	14	4		47
SR400814	1/4	8	32	6	25,5	14,3	14	4		50



SR41 CODO CILINDRICO GIRATORIO MACHO



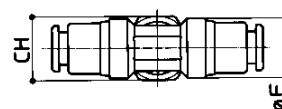
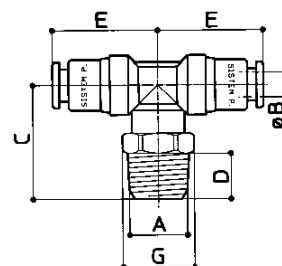
CODIGO	A	B	C	D	E	F	G	CH	CH1	Gr
SR4104M5	M5	4	16	4	20	10	12,2	11		11
SR410418	1/8	4	19	6	20	10	14,3	13		14
SR410414	1/4	4	21,5	8	20	10	17,5	16		23
SR4105M5	M5	5	19	4	20,5	11	12,2	11		13
SR410518	1/8	5	21	6	20	11	14,3	13		17
SR410514	1/4	5	23	8	20	11	17,5	16		24
SR4106M5	M5	6	18	4	23	13	13	12		18
SR4106M10x100	M10x100	6	20,5	6	23	13	14,3	13		21
SR4106M12x100	M12x100	6	22	8	23	13	17,5	16		25
SR4106M12x125	M12 x125	6	22	8	23	13	17,5	16		24
SR4106M12x150	M12 x150	6	22	8	23	13	17,5	16		24
SR410618	1/8	6	20,5	6	23	13	14,3	13		21
SR410614	1/4	6	22	8	23	13	17,5	16		26
SR4108M10x100	M10x100	8	21,5	6	25	15	15,5	14		26
SR4108M12x100	M12x100	8	23	8	25	15	17,5	16		29
SR4108M12x125	M12 x125	8	23	8	25	15	17,5	16		29
SR4108M12x150	M12 x150	8	23	8	25	15	17,5	16		29
SR410818	1/8	8	21,5	6	25	15	15,5	14		27
SR410814	1/4	8	23	8	25	15	17,5	16		31
SR410838	3/8	8	26,5	10	25	15	22	20		46
SR411014	1/4	10	29	8	28,5	17,5	20,7	19		48
SR411038	3/8	10	30,5	10	28,5	17,5	22	20		57
SR411012	1/2	10	31	12	28,5	17,5	26,8	24		75
SR411214	1/4	12	28,5	8	32	21,5	24,5	22		72
SR411238	3/8	12	31	10	32	21,5	24,5	22		74
SR411212	1/2	12	34	12	32	21,5	26,8	24		91
SR411438	3/8	14	34	10	36,5	25,5	29	26		120
SR411412	1/2	14	36	12	36,5	25,5	29	26		128



SR42 T CENTRAL CONICA GIRATORIA MACHO



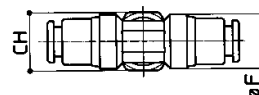
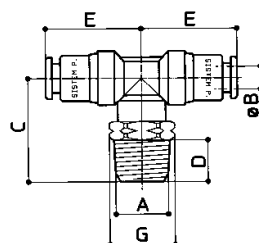
CODIGO	A	B	C	D	E	F	G	CH	CH1	Gr
SR420418	1/8	4	21	8	20	10	12,2	11		19
SR420414	1/4	4	23	10	20	10	15,5	14		27
SR420518	1/8	5	22	8	20,5	11	12,2	11		21
SR420514	1/4	5	24	10	20,5	11	15,5	14		29
SR420618	1/8	6	23	8	23	13	13,4	12		29
SR420614	1/4	6	25	10	23	13	15,5	14		36
SR420818	1/8	8	24	8	25	15	15,5	14		39
SR420814	1/4	8	26	10	25	15	15,5	14		43
SR420838	3/8	8	26	11	25	10	19	17		55
SR421014	1/4	10	29	10	28,5	17,5	21,2	19		65
SR421038	3/8	10	30	11	28,5	17,5	21,2	19		71
SR421012	1/2	10	32	14	28,5	17,5	24,5	22		91
SR421214	1/4	12	30	10	32	21,5	24,5	22		95
SR421238	3/8	12	33	11	32	21,5	24,5	22		100
SR421212	1/2	12	35	14	32	21,5	24,5	22		116
SR421438	3/8	14	35	11	36,5	25,5	29	26		160
SR421412	1/2	14	38	14	36,5	25,5	29	26		173



SR42NPT T CENTRAL CONICA GIRATORIA MACHO NPT



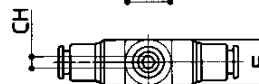
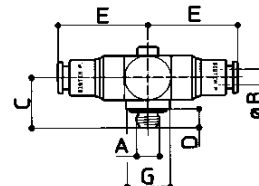
CODIGO	A	B	C	D	E	F	G	CH	CH1	Gr
SR42NPT0418	1/8	4	21	8	20	10	12,2	11		19
SR42NPT0414	1/4	4	23	10	20	10	15,5	14		27
SR42NPT0618	1/8	6	23	8	23	13	13,4	12		29
SR42NPT0614	1/4	6	25	10	23	13	15,5	14		36
SR42NPT0818	1/8	8	24	8	25	15	15,5	14		39
SR42NPT0814	1/4	8	26	10	25	15	15,5	14		43
SR42NPT1038	3/8	10	30	11	28,5	17,5	21,2	19		71
SR42NPT1238	3/8	12	33	11	32	21,5	24,5	22		100
SR42NPT1212	1/2	12	35	14	32	21,5	24,5	22		116



SR43 T CENTRAL CILINDRICA GIRATORIA MACHO



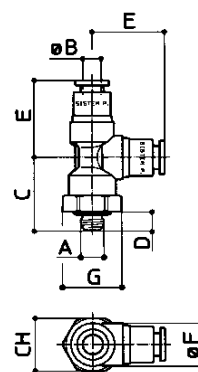
CODIGO	A	B	C	D	E	F	G	CH	CH1	Gr
SR4304M5	M5	4	16	4	20	10	12,2	11		15
SR4304M6x075	-	-	-	-	-	-	-	-	-	-
SR4304M6x100	-	-	-	-	-	-	-	-	-	-
SR4304M8x100	-	-	-	-	-	-	-	-	-	-
SR430418	1/8	4	19	6	20	10	14,3	13		18
SR430414	1/4	4	21,5	8	20	10	17,5	16		25
SR4305M5	M5	5	19	4	20,5	11	12,2	11		17
SR4305M6x075	M6x075	5	21	5	20,5	11	12,2	12		17
SR430518	1/8	5	21	6	20	11	14,3	13		21
SR430514	1/4	5	23	8	20	11	17,5	16		30
SR4306M5	M5	6	18	4	23	13	13	12		25
SR4306M10x100	-	-	-	-	-	-	-	-	-	-
SR4306M12x100	-	-	-	-	-	-	-	-	-	-
SR4306M12x125	M12 x125	6	22	8	23	13	17,5	16		32
SR4306M12x150	M12 x150	6	22	8	23	13	17,5	16		32
SR430618	1/8	6	20,5	6	23	13	14,3	13		29
SR430614	1/4	6	22	8	23	13	17,5	16		34
SR4308M10x100	-	-	-	-	-	-	-	-	-	-
SR4308M12x100	-	-	-	-	-	-	-	-	-	-
SR4308M12x125	M12 x125	8	23	8	25	15	17,5	16		40
SR4308M12x150	M12 x150	8	23	8	25	15	17,5	16		40
SR430818	1/8	8	21,5	6	25	15	15,5	14		38
SR430814	1/4	8	23	8	25	15	17,5	16		42
SR430838	3/8	8	26,5	10	25	15	22	20		57
SR431014	1/4	10	29	8	28,5	17,5	20,7	19		62
SR431038	3/8	10	30,5	10	28,5	17,5	22	20		71
SR431012	1/2	10	31	12	28,5	17,5	26,8	24		89
SR431214	1/4	12	28,5	8	32	21,5	24,5	22		95
SR431238	3/8	12	31	10	32	21,5	24,5	22		97
SR431212	1/2	12	34	12	32	21,5	26,8	24		115
SR431438	3/8	14	34	10	36,5	25,5	29	26		160
SR431412	1/2	14	36	12	36,5	25,5	29	6		166



SR44 T LATERAL CILINDRICA GIRATORIA MACHO



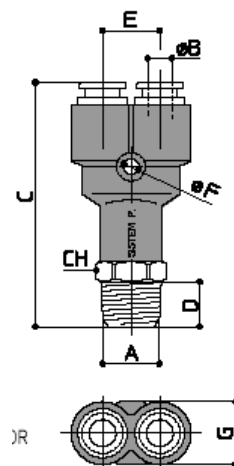
CODIGO	A	B	C	D	E	F	G	CH	CH1	Gr
SR4404M5	M5	4	18	4	20	10	12,2	11		15
SR440418	1/8	4	20	6	20	10	14,3	13		18
SR440414	1/4	4	23,5	8	20	10	17,5	16		26
SR4405M5	M5	5	19	4	20,5	11	12,2	11		17
SR440518	1/8	5	21	6	20,5	11	14,3	13		20
SR440514	1/4	5	23	8	20,5	11	17,5	16		28
SR4406M12x125	M12 x125	6	24	8	23	13	17,5	16		32
SR4406M12x150	M12 x150	6	24,5	8	23	13	17,5	16		32
SR440618	1/8	6	22	6	23	13	14,3	14		32
SR440614	1/4	6	24,5	8	23	13	17,5	16		38
SR4408M12x125	M12x125	8	25	8	25,5	15	17,5	16		40
SR4408M12x150	M12x150	8	25	8	25,5	15	17,5	16		40
SR440818	1/8	8	24	6	25,5	15	15,5	16		44
SR440814	1/4	8	25	8	25,5	15	17,5	16		43
SR441014	1/4	10	28	8	29	17,5	20,7	19		62
SR441038	3/8	10	32	10	29	17,5	22	20		71
SR441012	1/2	10	32	12	29	17,5	26,8	24		89
SR441214	1/4	12	31	8	31	21,5	24,5	22		95
SR441238	3/8	12	33	10	31	21,5	24,5	22		97
SR441212	1/2	12	36	12	31	21,5	26,8	24		114
SR441438	3/8	14	37	10	36	25,5	29	26		158
SR441412	1/2	14	39	12	36	25,5	29	26		169



SR45 REPARTIDOR CONICO GIRATORIO MACHO EN RESINA ACETALICA



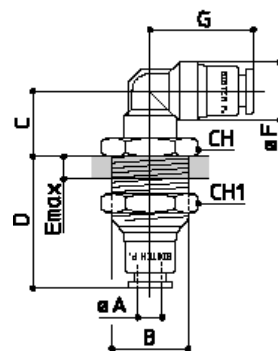
CODIGO	A	B	C	D	E	F	G	CH	CH1	Gr
SR4504M5	M5	4	39,5	4	10	3,2	11	10		13
SR450418	1/8	4	43,5	8	10	3,2	11	11		15
SR450414	1/4	4	46	10	10	3,2	11	14		22
SR450618	1/8	6	51,5	8	13	3,2	14	14		29
SR450614	1/4	6	54	10	13	3,2	14	14		31
SR450818	1/8	8	58,5	8	17	4,2	16	16		41
SR450814	1/4	8	61,5	10	17	4,2	16	16		43
SR450838	3/8	8	62,5	11	17	4,2	17	17		46



SR47 CODO PASATABIQUES GIRATORIO



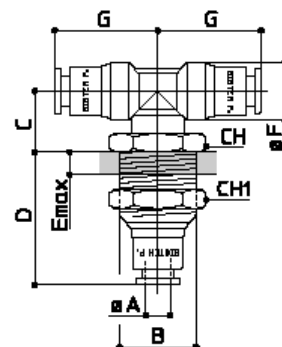
CODIGO	A	B	C	D	E	F	G	CH	CH1	Gr
SR470404	4	M12x100	12,5	24,5	10	10	20	13	14	25
SR470505	5	M12x100	14,5	24,5	10	11	20	13	14	30
SR470606	6	M15x100	14,5	28,5	11	13	23	18	18	48
SR470808	8	M17x100	15,5	32	13	15	25	20	20	66
SR471010	10	M20x150	19,5	32,5	13	17,5	28,5	22	22	89
SR471212	12	M22x150	20,5	34	13	21,5	32	25	25	120



SR48 T CENTRAL PASATABIQUES GIRATORIA



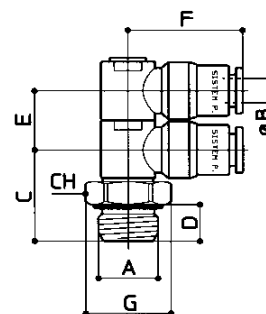
CODIGO	A	B	C	D	E	F	G	CH	CH1	Gr
SR480404	4	M12x100	12,5	24,5	10	10	20	13	14	29
SR480505	5	M12x100	14,5	24,5	10	11	20	13	14	38
SR480606	6	M15x100	14,5	28,5	11	13	23	18	18	56
SR480808	8	M17x100	15,5	32	13	15	25	20	20	77
SR481010	10	M20x150	19,5	32,5	13	17,5	28,5	22	22	104
SR481212	12	M22x150	20,5	34	13	21,5	32	25	25	143



SR49 CODO CILINDRICO GIRATORIO MACHO DOBLE



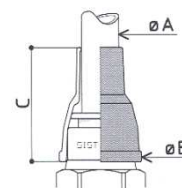
CODIGO	A	B	C	D	E	F	G	CH	CH1	Gr
SR490418	1/8	4	16,5	6	10,5	21	14,3	13		22
SR490518	1/8	5	16	6	10	23	14,3	13		27
SR490618	1/8	6	18	6	13	25	14,3	13		37



SR50 PROTECCION TUBO



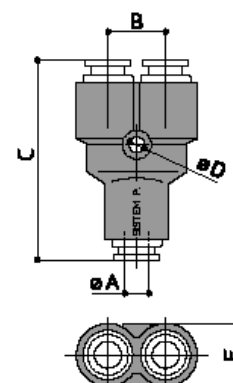
CODIGO	A	B	C	D	E	F	G	CH	CH1	Gr
SR500004	4	9,5	20							1
SR500005	5	10,5	15,5							1
SR500006	6	13,5	26,5							1
SR500008	8	15,5	28							1
SR500010	10	19	29							2
SR500012	12	22	33,5							3
SR500014	14	25	33							4



SR51 REPARTIDOR INTERMEDIO (CUERPO RESINA ACETALICA)



CODIGO	A	B	C	D	E	F	G	CH	CH1	Gr
SR510004	4	10	35	3,2	11					10
SR510006	6	13	45	3,2	14					22
SR510008	8	17	51,5	4,2	16					31

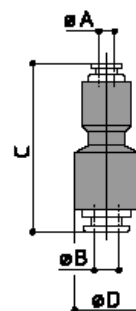


SR52 PROLONGADOR REDUCTOR EN RESINA ACETALICA



CODIGO	A	B	C	D	E	F	G	CH	CH1	Gr
SR520405	4	5	34,5	11						12
SR520405M*	4	5	34,5	13						12
SR520406	4	6	39	14						11
SR520406M*	4	6	39	13						11
SR520408	4	8	41	16						13
SR520410	4	10	41	18,5						17
SR520412	4	12	41	22						17
SR520506	5	6	38,5	13						12
SR520506M*	5	6	39	13						12
SR520608	6	8	43	16						16
SR520608M*	6	8	42,5	15						16
SR520610	6	10	44	18,5						20
SR520612	6	12	45	22						24
SR520810	8	10	46	18,5						22
SR520812	8	12	46	22						27
SR520814	8	14	50	26						43
SR521012	10	12	50	22						32
SR521014	10	14	53	26						50
SR521214	12	14	53,5	26						53

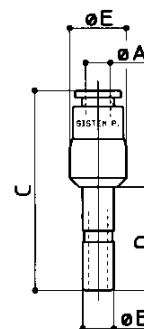
* CUERPO EN METAL



SR53 ACOPLAMIENTO TUBO-TUBO



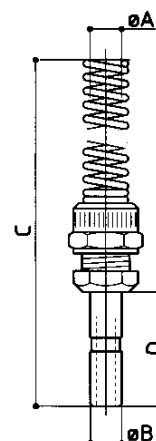
CODIGO	A	B	C	D	E	F	G	CH	CH1	Gr
SR530606	6	6	43,5	21	12					13
SR530808	8	8	48,5	22	14					19



SR 54 ACOPLAMIENTO CON MUELLE



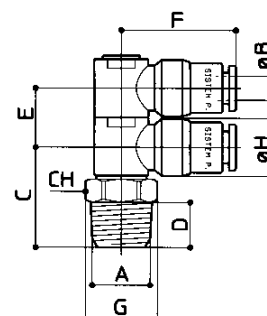
CODIGO	A	B	C	D	E	F	G	CH	CH1	Gr
SR540606	6	6	125	21				12	10	26
SR540808	8	8	127	22				14	12	38



SR55 CODO CONICO GIRATORIO MACHO DOBLE



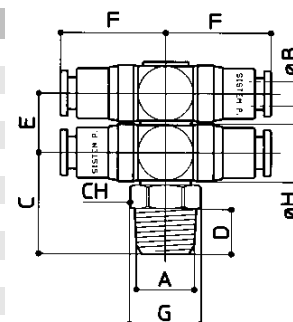
CODIGO	A	B	C	D	E	F	G	CH	CH1	Gr
SR550418	1/8	4	17	8	10,5	19	11,2	10	10	33
SR550518	1/8	5	17	8	10,5	21	11,2	10	10	37
SR550618	1/8	6	19	8	13	24	12,2	12,5	11	54
SR550614	1/4	6	22	10	13	24	15,5	12,5	14	67
SR550818	1/8	8	20	8	15	26	13,4	14	12	72
SR550814	1/4	8	23,5	10	15,5	26	15,5	14	14	80
SR551014	1/4	10	25	10	17,5	29	15,5	17	14	112
SR551038	3/8	10	27	11	17,5	29	19	17	17	125



SR56 T CENTRAL CONICA GIRATORIA MACHO DOBLE



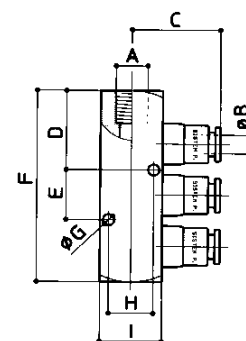
CODIGO	A	B	C	D	E	F	G	CH	CH1	Gr
SR560418	1/8	4	17	8	10,5	19	11,2	10	10	33
SR560518	1/8	5	17	8	10,5	21	11,2	10	10	37
SR560618	1/8	6	19	8	13	24	12,2	12,5	11	54
SR560614	1/4	6	22	10	13	24	15,5	12,5	14	67
SR560818	1/8	8	20	8	15	26	13,4	14	12	72
SR560814	1/4	8	23,5	10	15,5	26	15,5	14	14	80
SR561014	1/4	10	25	10	17,5	29	15,5	17	14	112
SR561038	3/8	10	27	11	17,5	29	19	17	17	125



SR57 REPARTIDOR SIMPLE



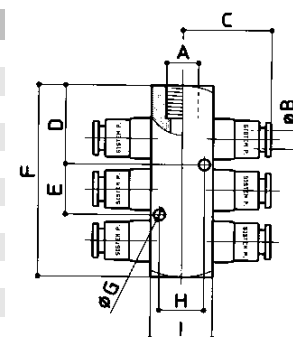
CODIGO	A	B	C	D	E	F	G	CH	CH1	Gr
SR570418	1/8	4	23	22	15	56	3,25	13	18x18	54
SR570518	1/8	5	24	23	15	56	3,25	13	18x18	135
SR570618	1/8	6	29	23	15	56	3,25	13	18x18	72
SR570614	1/4	6	30	27	15	58	3,7	14,3	20x20	177
SR570638	3/8	6	30	30	17	66	3,7	14,3	20x20	197
SR570838	3/8	8	32	30	17	66	3,7	14,3	20x20	200
SR571038	3/8	10	40	33	40	78	4,6	21,5	30x20	151
SR571012	1/2	10	40	33	40	78	4,6	21,5	30x25	175
SR571212	1/2	12	42	38,5	44	87	4,6	21,5	30x25	227



SR58 REPARTIDOR DOBLE



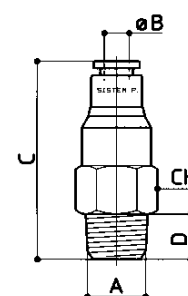
CODIGO	A	B	C	D	E	F	G	CH	CH1	Gr
SR580418	1/8	4	23	22	15	56	3,25	13	18x18	67
SR580518	1/8	5	24	23	15	56	3,25	13	18x18	144
SR580618	1/8	6	29	23	15	56	3,25	13	18x18	101
SR580614	1/4	6	30	27	15	58	3,7	14,3	20x20	203
SR580638	3/8	6	30	30	17	66	3,7	14,3	20x20	113
SR580838	3/8	8	32	30	17	66	3,7	14,3	20x20	230
SR581038	3/8	10	40	33	40	78	4,6	22	30x20	204
SR581012	1/2	10	40	33	40	78	4,6	22	30x25	232
SR581212	1/2	12	42	38,5	44	87	4,6	22	30x25	326



SR59 ENCHUFE RAPIDO RECTO CONICO MACHO



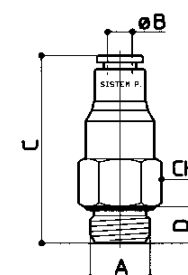
CODIGO	A	B	C	D	E	F	G	CH	CH1	Gr
SR590618	1/8	6	43	8				15		32
SR590614	1/4	6	46	10				15		37
SR590818	1/8	8	47	8				17		43
SR590814	1/4	8	49	10				17		45
SR591014	1/4	10	53,5	10				20		59
SR591038	3/8	10	54,5	11				20		64



SR60 ENCHUFE RAPIDO RECTO CILINDRICO MACHO



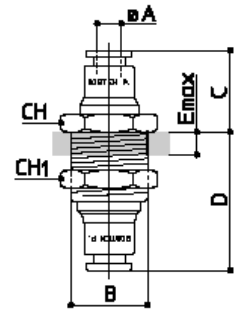
CODIGO	A	B	C	D	E	F	G	CH	CH1	Gr
SR600618	1/8	6	43	6				15		31
SR600614	1/4	6	44	8				16		38
SR600818	1/8	8	45	6				17		43
SR600814	1/4	8	48	8				17		45



SR61 ENCHUFE RAPIDO PROLONGADOR PASATABIQUE



CODIGO	A	B	C	D	E	F	G	CH	CH1	Gr
SR610006	6	M17x1	21	33	12			19	20	50
SR610008	8	M20x1	21,5	35,5	12			22	22	64



SR62 ENCHUFE RAPIDO PASATABIQUE HEMBRA



CODIGO	A	B	C	D	E	F	G	CH	CH1	Gr
SR620618	6	M17x1	21	26	12	1/8	19	20	14	47
SR620814	8	M20x1	21,5	29,5	12	1/4	22	22	16	60

