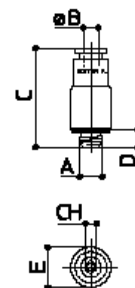


## 10 RECTO CILINDRICO MACHO ESPECIAL (CUERPO EN METAL)



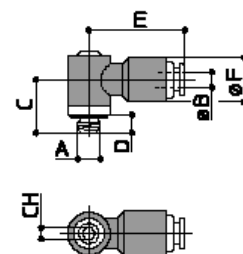
CODIGO	A	B	C	D	E	F	G	CH	CH1	Gr
105408	M5	4	22	4	9			2,5		6
106408	M6x075	4	23	5	9			2,5		6
106148	M6x100	4	23	5	9			2,5		6



## 20 MINI CODO CILINDRICO GIRATORIO MACHO



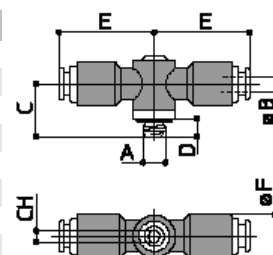
CODIGO	A	B	C	D	E	F	G	CH	CH1	Gr
205481	M5	4	11,5	4	21,5	9,8		2,5		6
206481	M6 x075	4	12,5	5	21,5	9,8		2,5		6
206181	M6x100	4	12,5	5	21,5	9,8		2,5		6



## 40 MINI T CILINDRICA GIRATORIA MACHO



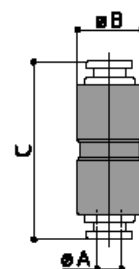
CODIGO	A	B	C	D	E	F	G	CH	CH1	Gr
405481	M5	4	11,5	4	21,5	9,8		2,5		9
406481	M6 x075	4	12,5	5	21,5	9,8		2,5		9
406181	M6x100	4	12,5	5	21,5	9,8		2,5		9



## 50 PROLONGADOR



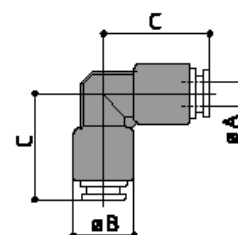
CODIGO	A	B	C	D	E	F	G	CH	CH1	Gr
500041	4	11	34							6
500061	6	14	40							13
500081	8	16	43							18
500101	10	19	50							27
500121	12	22	51,5							36
500141	14	26	57							69



## 60 CODO INTERMEDIO



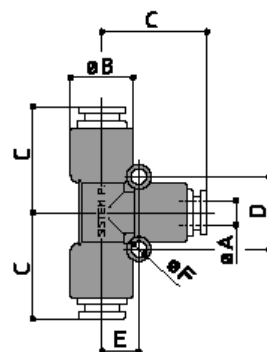
CODIGO	A	B	C	D	E	F	G	CH	CH1	Gr
600041	4	10	18,5							9
600061	6	13,5	24							20
600081	8	15,5	25,5							27
600101	10	18,5	30							39



## 70 T INTERMEDIA



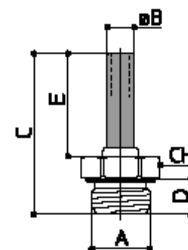
CODIGO	A	B	C	D	E	F	G	CH	CH1	Gr
700041	4	10	18,5	12,5	6	2,5				15
700061	6	13,5	24	16,5	8,5	3				31
700081	8	15,5	25,5	18,5	9	3				41
700101	10	18,5	30	22,5	11,5	4				63



## E59 ADAPTADOR RECTO CILINDRICO MACHO



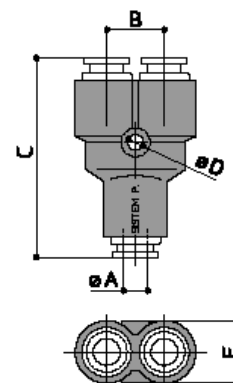
CODIGO	A	B	C	D	E	F	G	CH	CH1	Gr
E598047	1/8	4	31	6	20			13		9
E598067	1/8	6	34	6	23			13		9
E594067	1/4	6	36	8	23			16		16
E598087	1/8	8	36	6	23			13		8
E594087	1/4	8	38	8	23			16		16
E593087	3/8	8	39	10	23			20		24
594108	1/4	10	40	8	25			16		13
593108	3/8	10	41	10	25			20		22



## SR51 REPARTIDOR INTERMEDIO



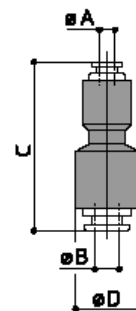
CODIGO	A	B	C	D	E	F	G	CH	CH1	Gr
SR510004	4	10	35	3,2	11					10
SR510006	6	13	45	3,2	14					22
SR510008	8	17	51,5	4,2	16					31



## SR52 PROLONGADOR REDUCTOR



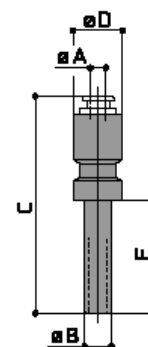
CODIGO	A	B	C	D	E	F	G	CH	CH1	Gr
SR520406	4	6	39	14						11
SR520408	4	8	41	16						13
SR520410	4	10	41	18,5						17
SR520412	4	12	41	22						17
SR520608	6	8	43	16						16
SR520610	6	10	44	18,5						20
SR520612	6	12	45	22						24
SR520810	8	10	46	18,5						22
SR520812	8	12	46	22						27
SR520814	8	14	50	26						43
SR521012	10	12	50	22						32
SR521014	10	14	53	26						50
SR521214	12	14	53,5	26						53



## SR25 REDUCCION FIJA



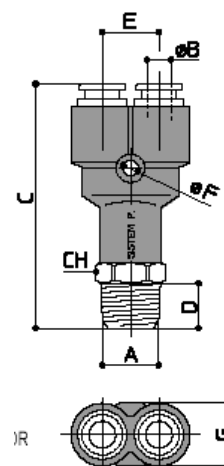
CODIGO	A	B	C	D	E	F	G	CH	CH1	Gr
SR250406	4	6	45,5	11	22					5
SR250408	4	8	48,5	14	25					6
SR250410	4	10	47,5	15,5	28					5
SR250412	4	12	49	16	30					18
SR250608	6	8	51	14	25					10
SR250610	6	10	50,5	15,5	28					9
SR250810	8	10	52	15,5	28					11
SR250612	6	12	53,5	16	30					9
SR250614	6	14	56,5	16	33					9
SR250812	8	12	54	16	30					11
SR250814	8	14	57	16	33					12
SR251012	10	12	56	18,5	30					15
SR251014	10	14	59	18,5	33					16
SR251214	12	14	60	22	33					20



## SR45 REPARTIDOR CONICO MACHO



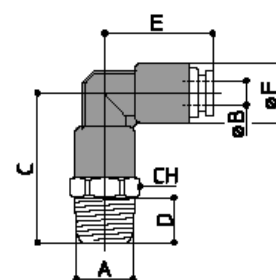
CODIGO	A	B	C	D	E	F	G	CH	CH1	Gr
SR4504M5	M5	4	39,5	4	10	3,2	11	10		13
SR450418	1/8	4	43,5	8	10	3,2	11	11		15
SR450414	1/4	4	46	10	10	3,2	11	14		22
SR450618	1/8	6	51,5	8	13	3,2	14	14		29
SR450614	1/4	6	54	10	13	3,2	14	14		31
SR450818	1/8	8	58,5	8	17	4,2	16	16		41
SR450814	1/4	8	61,5	10	17	4,2	16	16		43
SR450838	3/8	8	62,5	11	17	4,2	17	17		46



## 20 CODO CONICO GIRATORIO MACHO



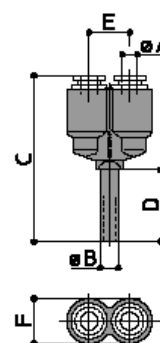
CODIGO	A	B	C	D	E	F	G	CH	CH1	Gr
205041	M5	4	23	4	18,5	10		10		9
208041	1/8	4	26,5	8	18,5	10		11		11
204041	1/4	4	29,5	10	18,5	10		14		17
208061	1/8	6	30,5	8	24	13,5		14		20
204061	1/4	6	33,5	10	24	13,5		14		23
208081	1/8	8	32	8	25,5	15,5		16		28
204081	1/4	8	35	10	25,5	15,5		16		31
203081	3/8	8	36	11	25,5	15,5		17		33
204101	1/4	10	39	10	30	18,5		19		42
203101	3/8	10	40	11	30	18,5		19		45
202101	1/2	10	43	14	30	18,5		22		47



## 53 ACOPLAMIENTO TUBO EN "Y"



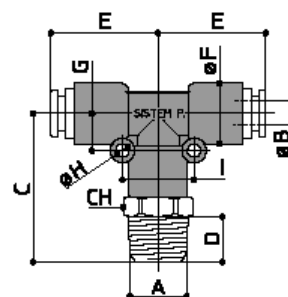
CODIGO	A	B	C	D	E	F	G	CH	CH1	Gr
534042	4	4	37	16	9	10				6
534062	4	6	41	22	9	10				6
534082	4	8	44	25	9	10				7



## 40 T CENTRAL CONICA GIRATORIA MACHO



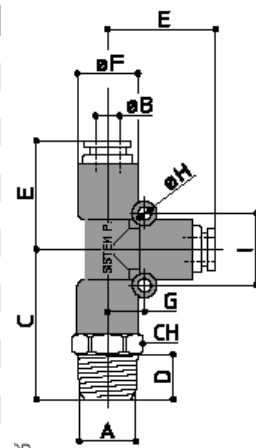
CODIGO	A	B	C	D	E	F	G	H	I	CH	Gr
405041	M5	4	23	4	18,5	10	6	2,5	12	10	12
408041	1/8	4	26,5	8	18,5	10	6	2,5	12	11	14
404041	1/4	4	29,5	10	18,5	10	6	2,5	12	14	20
408061	1/8	6	30,5	8	24	13,5	8,5	3	16	14	27
404061	1/4	6	33,5	10	24	13,5	8,5	3	16	14	30
408081	1/8	8	32	8	25,5	15,5	9	3	18	16	37
404081	1/4	8	35	10	25,5	15,5	9	3	18	16	40
403081	3/8	8	36	11	25,5	15,5	9	3	18	17	43
404101	1/4	10	39	10	30	18,5	11,5	4	22	19	55
403101	3/8	10	40	11	30	18,5	11,5	4	22	19	59
402101	1/2	10	43	14	30	18,5	11,5	4	22	22	61



## 33 T LATERAL CONICA GIRATORIA MACHO



CODIGO	A	B	C	D	E	F	G	H	I	CH1	Gr
335041	M5	4	23	4	18,5	10	6	2,5	12	10	12
338041	1/8	4	26,5	8	18,5	10	6	2,5	12	11	14
334041	1/4	4	29,5	10	18,5	10	6	2,5	12	14	20
338061	1/8	6	30,5	8	24	13,5	8,5	3	16	14	27
334061	1/4	6	33,5	10	24	13,5	8,5	3	16	14	30
338081	1/8	8	32	8	25,5	15,5	9	3	18	16	37
334081	1/4	8	35	10	25,5	15,5	9	3	18	16	40
333081	3/8	8	36	11	25,5	15,5	9	3	18	17	43
334101	1/4	10	39	10	30	18,5	11,5	4	22	19	55
333101	3/8	10	40	11	30	18,5	11,5	4	22	19	59
332101	1/2	10	43	14	30	18,5	11,5	4	22	22	61



## 54 ACOPLAMIENTO TUBO EN CODO



CODIGO	A	B	C	D	E	F	G	CH	CH1	Gr
544042	4	4	21	16	17	9,8				3
544062	4	6	27	22	17	9,8				4
546062	6	6	29	22	21	13,5				7
548082	8	8	33	25	23	15,5				11

